



CSC-31247 / MT 184 - Feature at a Glance

Batch traceability for subcontracting with integration with SAP Business Network for Logistics

Content Owner: Christoph Huber
Target GA: November, 2024

Introducing: Batch traceability for subcontracting with integration with SAP Business Network for Logistics

Feature Description

Enhanced data integration from SAP S/4HANA, SAP ERP, and SAP Business Network for Supply Chain to SAP Business Network Material Traceability for:

- Component deliveries to the subcontractor
- Component receipts at the subcontractor
- Delivery of product from the subcontractor to the ordering company
- Receipt of product at the ordering company

Buyer and supplier access to genealogy data, which tracks the history and origin of materials and products

Key Benefits

- Increase visibility on subcontracting processes for the ordering company
- Integrate traceability data automatically from supplier accounts in SAP Business Network for Supply Chain
- Enhance integration from SAP S/4HANA and SAP ERP to provide traceability data for subcontracting processes

Audience:

Buyer

Enablement Model:

Customer Configured

Applicable Solutions:

Business Network
Material Traceability
Business Network for
Supply Chain



Prerequisites, Restrictions, Cautions

Prerequisite

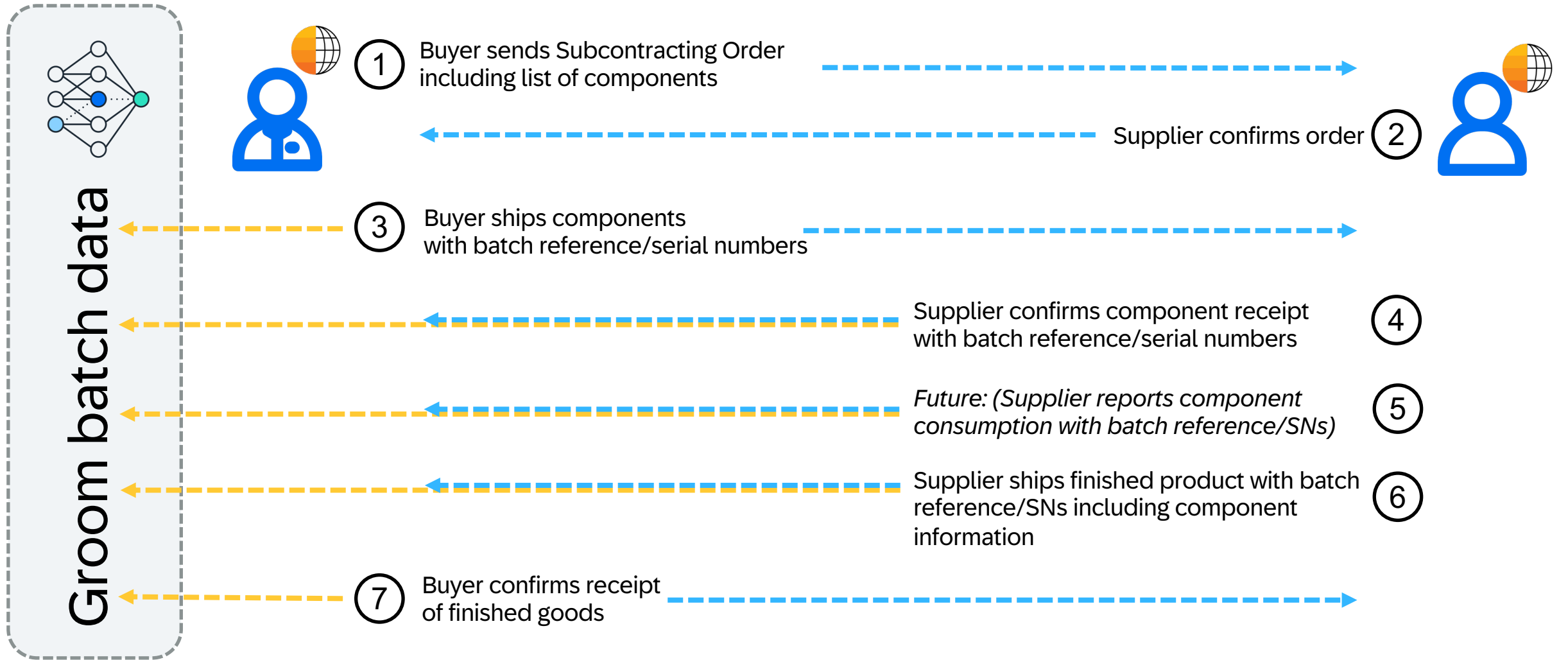
- SAP Business Network for Supply Chain (SKUs 8007896, 8005449, 8004527, or 8003328)
- Suppliers are enabled for Supply Chain Collaboration
- For suppliers in scope the buyer has extended the relationship to Material Traceability
- Subcontracting scenario with component shipment, component receipt, and component consumption reported in the ship notice (backflush scenario) is used
- Integration of buyer's S/4HANA or SAP ERP system is configured for Material Traceability (add-on installation & system connection)

Restriction

- Only available for SAP Business Network Material Traceability SKU 8018329 – not compatible with SKUs 8008021 and 8008022
- Real time component consumption scenario is not supported yet



Capture all deliver, receipt and produce events to build product genealogy – **Subcontracting of finished Goods**



Example – Component Shipment



Outbound Delivery: 80004013 Change: Overview

Document Date: 25.09.2024

Ship-To Party: 51

Item Overview: Picking Loading Shipment Status Overview Goods Movement Data

Pick Date/Time: 25.09.2024 00:00

Warehouse No.:

OverallWMSStatus: No WM transf ord reqd

Item	Material	Pint	SL	Deliv. Qty	Un	Picked Qty	Un	Batch	B. F	V	Stag. Date	Matl.	Val. Type	Description
10	MT-SC-DIAMOND	0004	0001	2	EA	2	EA		C		25.09.2024 00:00			MT Diamond
20	MT-SC-GOLD	0004	0001	5	G	5	G	MTSCGOLDA	C		25.09.2024 00:00			MT Gold

Buyer creates subcontracting component delivery including a batch line item...

... and a line item for a serialized component and posts the goods issue

Maintain Serial Numbers

Delivery: 80004013 Item: 10

Material: MT-SC-DIAMOND

No. serial no: 2 / 2

Serial Number	E
2532	<input type="checkbox"/>
2533	<input type="checkbox"/>

Create serial number automatically

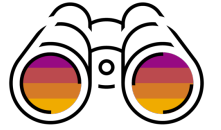
Goods Movement Data

Fully picked

No WM transf ord reqd

Qty	Un	Batch	B. F	V	Stag. Date	Matl.	Val. Type	Description
	EA		C		25.09.2024 00:00			MT Diamond
	G	MTSCGOLDA	C		25.09.2024 00:00			MT Gold

Example – Component Receipt



SAP Business Network Supplier

https://svcgpanman05.lab-us.gcpint.ariba.com/SCMSupplier.aw/145917040/aw?awh=r&awssk=LqOFsDP7#b0

Business Network TEST MODE

Review Receipt

Previous Submit Exit

* Indicates required field

SHIP FROM

Ship Point
123/456 786
10243 Berlin
11
Germany
Email:

SHIP TO

MTSuppA
Hillview Ave
Palo Alto, 94304
United States
Email:

Receipt #: CR80004013
Receipt Date: 25 Sep 2024
Comments:

Components

Line #	Customer Part # / Description	Customer Batch #	Part #	Batch #	Received Quantity	Unit	Shipped Quantity	Unit	Shipment Reference #	Shipment Reference Line #	Order Reference #	Order Reference Line #	Actions
1	MT-SC-DIAMOND <i>MT Diamond</i>				2	EA	2.0	EA	80004013	10	4500123450	10	Actions
2	MT-SC-GOLD <i>MT Gold</i>	MTSCGOLDA		SubconGoldC	5	GRM	5.0	GRM	80004013	20	4500123450	10	Actions

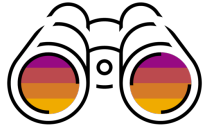
Previous Submit Exit

© 2022 SAP SE or an SAP affiliate company. All rights reserved. Privacy Statement Security Disclosure Terms of Use

16°C Regen Search ENG DE 22:03 25/09/2024

Supplier receives the component shipment and creates the component receipt for the batch and the serial numbers.

Example – Ship Notice Including Components



SAP Business Network Supplier

https://svcgpanman05.lab-us.gcpint.ariba.com/SCMSupplier.aw/145917040/aw?awh=r&awssk=LqOfsDP7#b0

Business Network TEST MODE

Create Ship Notice

OK Cancel

Order No.	Line No.	Part No.	Customer Part No.	Qty	Unit	Need By	Ship By	Unit Price	Subtotal	Customer Location
4500123450	10	SUPA-RING	MT-SC-RING	1.000	EA	26 Sep 2024 CEST 26 Sep 2024 Buyer time		\$20,000.00 USD	\$20,000.00 USD	0004

Description: MT Ring

SHIPMENT STATUS
1. Shipping 1.000 EA

CONSUMED COMPONENTS

Line	Customer Part No. / Description	Customer Batch No.	Part No.	Batch No.	Quantity	Unit	Serial Number	Actions
1	MT-SC-DIAMOND	<input type="text"/> Look Up		<input type="text"/>	2	EA		Actions
MT Diamond								
2	MT-SC-GOLD	MTSCGOLDA		SubconGoldC	5	GRM	0/5	Actions
MT Gold								

Add Component Copy Order Quantities Copy Remaining Quantities Clear All Quantities

RETAIL DETAILS

Best Before:

Expires By:

Free Goods Quantity: Unit:

European Waste Catalog ID:

ASSET DETAILS

Serial Number	Asset Tag
<input type="text"/>	<input type="text"/>

Add Asset

HAZARD DETAILS

Supplier adds the consumed batch component to the ship notice

SAP Business Network Supplier

https://svcgpanman05.lab-us.gcpint.ariba.com/SCMSupplier.aw/145917040/aw?awh=r&awssk=LqOfsDP7#b0

Business Network TEST MODE

Create Ship Notice

OK Cancel

Order No.	Line No.	Part No.	Customer Part No.	Subtotal	Customer Location
4500123450	10	SUPA-RING	MT-SC-RING	\$20,000.00 USD	0004

Description: MT Ring

SHIPMENT STATUS
1. Shipping 1.000 EA

CONSUMED COMPONENTS

Line	Customer Part No. / Description	Customer Batch No.	Part No.	Batch No.	Quantity	Unit	Serial Number	Actions
1	MT-SC-DIAMOND				2	EA		Actions
MT Diamond								
2	MT-SC-GOLD	MTSCGOLDA		SubconGoldC	5	GRM	0/5	Actions
MT Gold								

Add Component Copy Order Quantities

RETAIL DETAILS

Best Before:

Expires By:

Free Goods Quantity: Unit:

European Waste Catalog ID:

ASSET DETAILS

Serial Number	Asset Tag
<input type="text"/>	<input type="text"/>

Add Asset

Consumed Component Serial Numbers

Order No. 4500123450 Line No. 10
Customer Part No. MT-SC-DIAMOND Qty 2

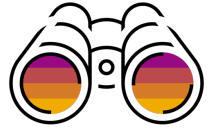
Serial Number	Remove
1 2532	Remove
2 2533	Remove

Add Serial Number

Done Cancel

Supplier adds the consumed serial numbers to the component line item of the ship notice

Example – Submit Ship Notice



CONSUMED COMPONENTS

Line	Customer Part No. / Description	Customer Batch No.	Part No.	Batch No.	Quantity	Unit	Serial Number	Actions
1	MT-SC-DIAMOND <i>MT Diamond</i>	<input type="text"/>		<input type="text"/>	2	EA	2/2	Actions -
2	MT-SC-GOLD <i>MT Gold</i>	MTSCGOLDA		SubconGoldC	5	GRM	0/5	Actions -

RETAIL DETAILS

Best Before:

Expires By:

Free Goods Quantity: Unit:

European Waste Catalog ID:

ASSET DETAILS

Serial Number	Asset Tag
CHR250924-2	<input type="text"/>

[Add Asset](#)

SHIPMENT STATUS

Order No.	Line No.	Part No.	Customer Part No.	Qty	Unit	Need By	Ship By	Unit Price	Subtotal	Customer Location
4500123450	10	SUPA-RING	MT-SC-RING	1.000	EA	26 Sep 2024 CEST 26 Sep 2024 Buyer time		\$20,000.00 USD	\$20,000.00 USD	0004

COMPONENTS CONSUMED

Line	Customer Part # / Description	Customer Batch #	Part #	Batch #	Qty (Unit)	Serial Number	Actions
1	MT-SC-DIAMOND <i>MT Diamond</i>				2 (EA)	2/2	Actions -
2	MT-SC-GOLD <i>MT Gold</i>	MTSCGOLDA		SubconGoldC	5 (GRM)	0/5	Actions -

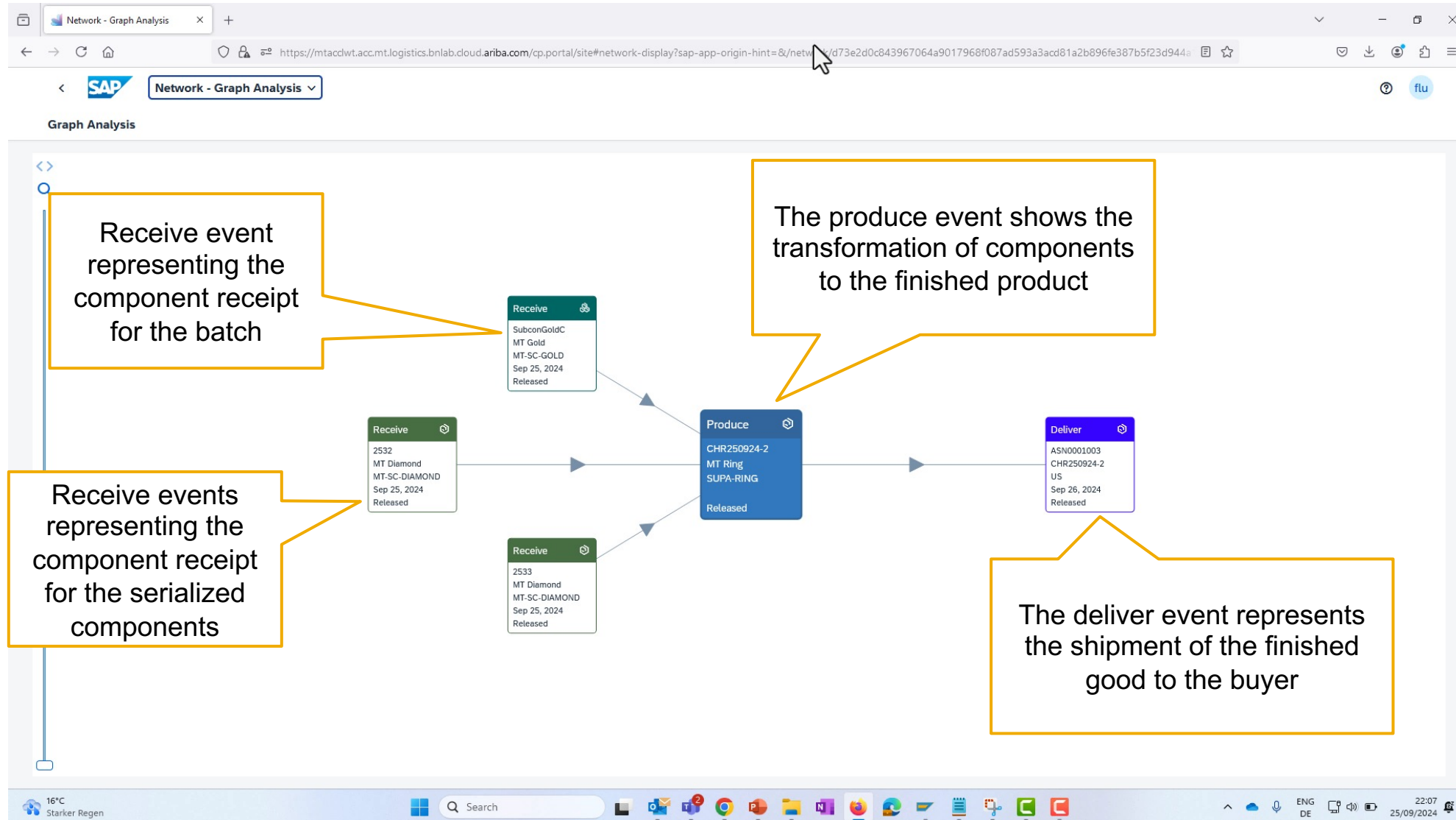
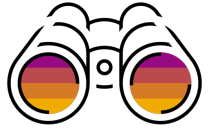
DELIVERY DETAILS

Delivery Terms: Transport Condition
Description: --
Shipping Payment Method: Prepaid-BySeller

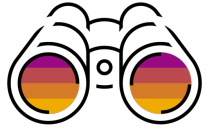
Transport Terms: CIF
Transport Terms Description: --
Transport Cargo: --

[Previous](#) [Save](#) [Submit](#) [Exit](#)

Example – Supplier's view in Material Traceability



Example – Goods Receipt for the Subcontracting PO



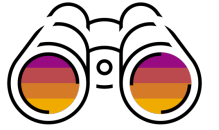
The screenshot shows the SAP Goods Receipt Inbound Delivery interface. The title bar reads "Goods Receipt Inbound Delivery 180006102 - Christoph Huber". The main area is divided into several sections:

- General Vendor:** Document Date: 25.09.2024, Delivery Note: ASN0001003, Supplier: MTSuppA, Posting Date: 25.09.2024, Bill of Lading: [empty], HeaderText: [empty].
- Table:** A table with columns: Line, Sta., Mat. Short Text, OK, Qty in UnE, E., SLoc, Cost Center, Order, WBS Element, Network. It contains three rows:

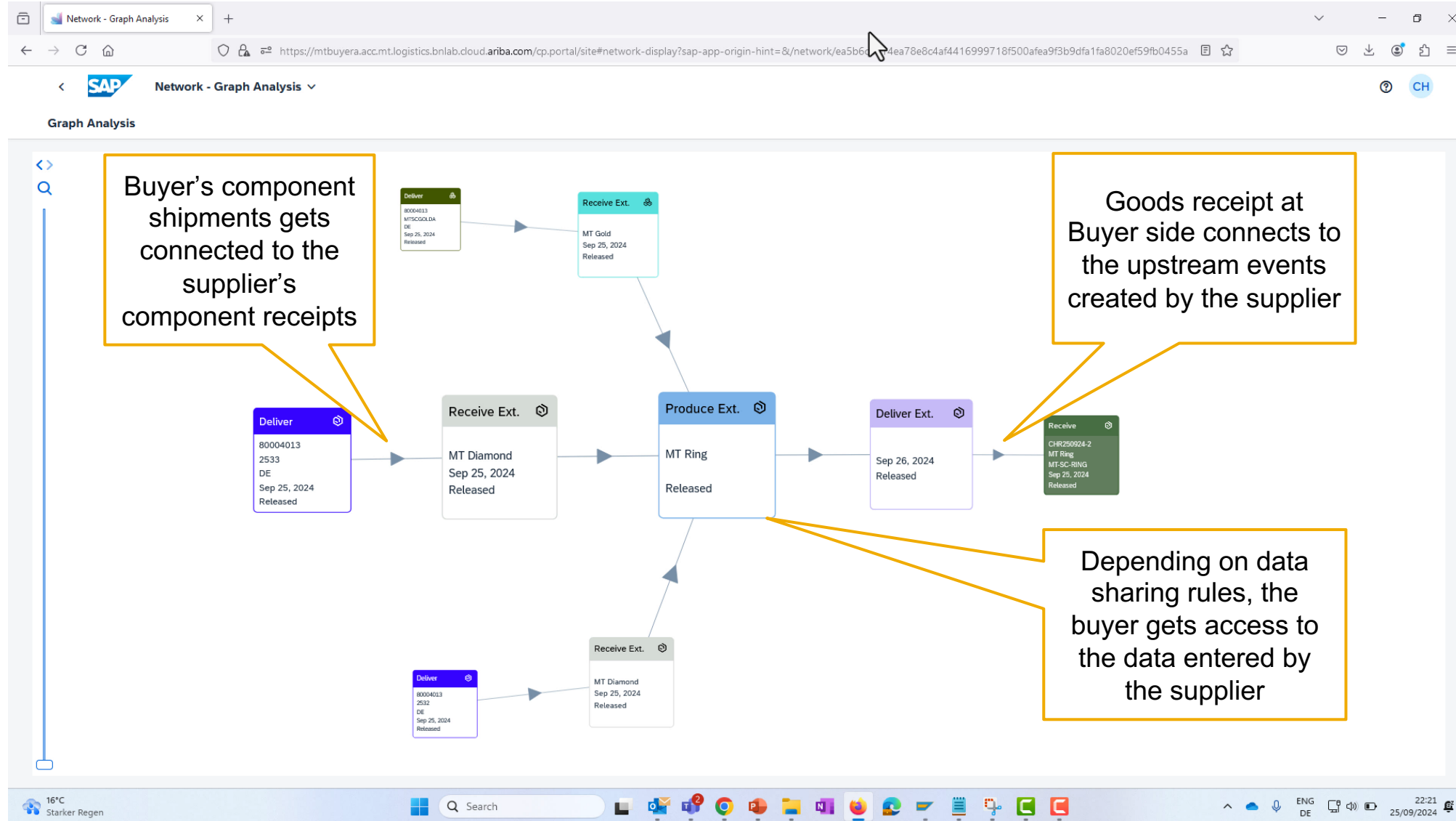
Line	Sta.	Mat. Short Text	OK	Qty in UnE	E.	SLoc	Cost Center	Order	WBS Element	Network
1	OA	MT Ring	<input checked="" type="checkbox"/>	1	EA	SLOC 0004				
1	OO	MT Diamond	<input checked="" type="checkbox"/>	2	EA					
1	OO	MT Gold	<input checked="" type="checkbox"/>	5	G					
- Material:** Material: MT Ring, Vendor Material No.: SUPA-RING, Material Group: 00503, MT-SC-RING, EAN in Order Unit: [empty], EAN Check: [empty].

At the bottom, there is a taskbar with system information: 16°C Starker Regen, Search, and system tray icons. The date and time are 25/09/2024 22:10.

Buyer receives the Advanced Ship Notice and posts the goods receipt for it



Example – Buyer’s view in Material Traceability



Follow us



www.sap.com/contactsap

© 2024 SAP SE or an SAP affiliate company. All rights reserved.

No part of this publication may be reproduced or transmitted in any form or for any purpose without the express permission of SAP SE or an SAP affiliate company. The information contained herein may be changed without prior notice. Some software products marketed by SAP SE and its distributors contain proprietary software components of other software vendors. National product specifications may vary. These materials are provided by SAP SE or an SAP affiliate company for informational purposes only, without representation or warranty of any kind, and SAP or its affiliated companies shall not be liable for errors or omissions with respect to the materials. The only warranties for SAP or SAP affiliate company products and services are those that are set forth in the express warranty statements accompanying such products and services, if any. Nothing herein should be construed as constituting an additional warranty. In particular, SAP SE or its affiliated companies have no obligation to pursue any course of business outlined in this document or any related presentation, or to develop or release any functionality mentioned therein. This document, or any related presentation, and SAP SE's or its affiliated companies' strategy and possible future developments, products, and/or platforms, directions, and functionality are all subject to change and may be changed by SAP SE or its affiliated companies at any time for any reason without notice. The information in this document is not a commitment, promise, or legal obligation to deliver any material, code, or functionality. All forward-looking statements are subject to various risks and uncertainties that could cause actual results to differ materially from expectations. Readers are cautioned not to place undue reliance on these forward-looking statements, and they should not be relied upon in making purchasing decisions. SAP and other SAP products and services mentioned herein as well as their respective logos are trademarks or registered trademarks of SAP SE (or an SAP affiliate company) in Germany and other countries. All other product and service names mentioned are the trademarks of their respective companies. See www.sap.com/trademark for additional trademark information and notices.