

Feature at a Glance

Support for Viewing SAP Ariba Category Management Analytical Cards in a Guided Sourcing Full Project (SS-33957)

Target GA: August 2023

Support for Viewing SAP Ariba Category Management Analytical Cards in a Guided Sourcing Full Project

Description

- This feature enables buyers using SAP Ariba Sourcing and SAP Ariba Category Management to select the SAP Ariba Category Management analytical cards in a guided sourcing full project template and view the analytical cards in a guided sourcing full project.

Customer benefit

- With this feature enabled, buyers can obtain data about the amount spent for a particular category, subcategory, region, or supplier from the SAP Ariba Category Management solution.
- Buyers can view the data on the corresponding analytical card in a guided sourcing full project.

User

- Buyer

Enablement model

- Customer configured

Applicable solutions:

- SAP Strategic Sourcing Suite
- SAP Ariba Sourcing
- SAP Ariba Category Management

Prerequisites, Restrictions, Cautions

Prerequisites

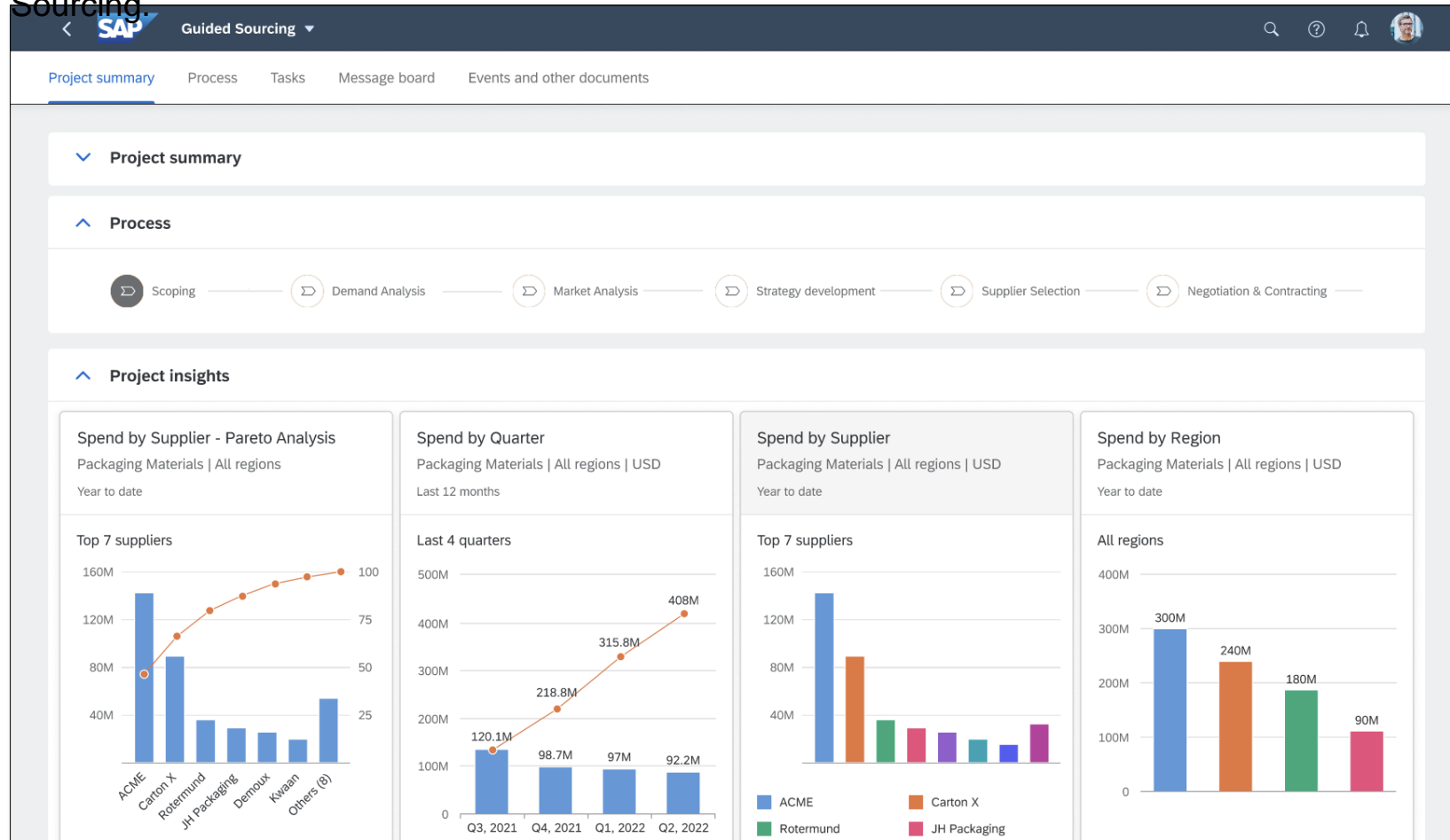
- Your organization must have the license and an active instance of SAP Ariba Category Management.
- Single sign-on (SSO) authentication must be configured in SAP Ariba Sourcing and SAP Cloud Identity Services – Identity Authentication service. Contact your Designated Support Contact (DSC) to enable it for your site. For more information about SSO authentication, see [User authentication and single sign-on using the SAP Cloud Identity Services – Identity Authentication service](#).
- For SAP Ariba Sourcing to communicate with SAP Ariba Category Management, users belonging to the Customer Administrator group must configure the following parameters in the Intelligent Configuration Manager workspace:
 - Application.AQS.CatMan.Enabled
 - Application.AQS.CatMan.Hostname
- In SAP Ariba Category Management, purchasing categories must be mapped to the SAP Ariba Sourcing commodities.
- To be able to select the analytical cards in a guided sourcing template, you must be a member of the global Template Creator group or the template project's Template Creators team.
- To be able to view the analytical cards in a guided sourcing project, you must be a member of the Category Buyer Analytical Card group.

Restrictions

- This feature is supported only in the guided sourcing user interface. To use this feature in the guided sourcing user interface, your site must have guided sourcing enabled and you must be a member of the Category Buyer group.

Feature details

The feature uses the commodity-to-category mapping and the region-to-region mapping to map data between SAP Ariba Category Management and SAP Ariba Sourcing. While the commodity-to-category mapping is created in SAP Ariba Category Management, mapping between regions in SAP Ariba Category Management and SAP Ariba Sourcing must be created by customer administrators in SAP Ariba Sourcing.



Feature details | Template Administrator View

Include Category Management into the Guided Sourcing Full Project via configuration in the template:

The screenshot displays the SAP Template Administrator interface. The top navigation bar includes tabs for Overview, Documents, Tasks, Team, Conditions, **Advanced Options** (highlighted with a yellow box), and History. The main content area is divided into Properties and Suggested steps for template editing. The Properties section shows details for the template 'DemoCatManTemplate', including its version (v5), ID (WS39719430), owner (Francis), and access control. The Suggested steps section lists nine actions for template editing, such as adding project groups, phases, and conditions. An inset window titled 'Insight Tiles' is overlaid on the bottom right, showing a 'Getting Started' editor and a list of 'Analytical Cards'. The 'Analytical Cards' list includes 'Card Name', 'Spend by Region', 'Category Spend', 'Spend by Supplier', and 'Spend by SubCategory', all of which are checked. A yellow arrow points to the 'Spend by Region' checkbox. A 'Save Analytical Cards' button is highlighted with a yellow box in the bottom right corner of the inset window.

- Template administrators can choose one or more analytical cards which shall be added to the Full Project upon creation by the Buyer. Users belonging to the Template Creator group can choose one or more of the following analytical cards in a guided sourcing project template:
 - Category Spend
 - Spend by Subcategory
 - Spend by Region
 - Spend by Supplier

Feature Details | Buyer's View Upon Full Project creation

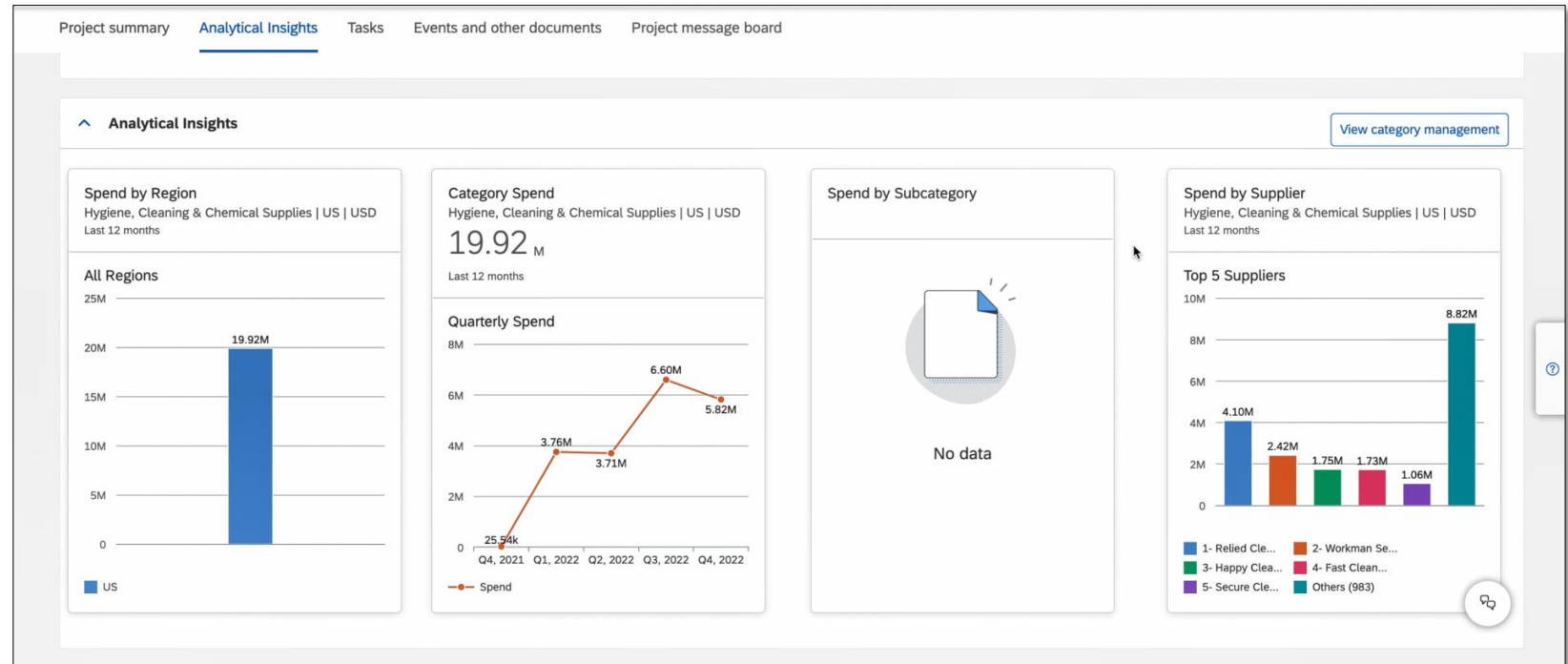
- This feature introduces a new user group: Category Buyer Analytical Card.
 - Users belonging to this group can view the latest spend data in a guided sourcing full project created with a template that has the analytical cards enabled.

Dynamic analytical cards update automatically based on the buyers input upon Full Project creation:

1. Enter Header Field information upon Full Project creation:

2. Data updates based on header field information

The screenshot shows a form for creating a project. The 'General information' section includes 'Name, description, and status' with a text field containing 'Demo Run' and a 'Project status' dropdown set to 'Gray'. The 'Template' section shows 'DemoCatManTemplate'. The 'Project information' section includes 'Version' (Original) and 'Start Date' (Nov 30, 2022). The 'Commodity' field is set to 'Cleaning Eq...' and the 'Regions' field is set to 'Delaware (DE)'. There are also fields for 'Execution Strategy', 'Access Control', and currency options.



Thank you.



Follow us



www.sap.com/contactsap

© 2023 SAP SE or an SAP affiliate company. All rights reserved.

No part of this publication may be reproduced or transmitted in any form or for any purpose without the express permission of SAP SE or an SAP affiliate company. The information contained herein may be changed without prior notice. Some software products marketed by SAP SE and its distributors contain proprietary software components of other software vendors. National product specifications may vary. These materials are provided by SAP SE or an SAP affiliate company for informational purposes only, without representation or warranty of any kind, and SAP or its affiliated companies shall not be liable for errors or omissions with respect to the materials. The only warranties for SAP or SAP affiliate company products and services are those that are set forth in the express warranty statements accompanying such products and services, if any. Nothing herein should be construed as constituting an additional warranty. In particular, SAP SE or its affiliated companies have no obligation to pursue any course of business outlined in this document or any related presentation, or to develop or release any functionality mentioned therein. This document, or any related presentation, and SAP SE's or its affiliated companies' strategy and possible future developments, products, and/or platforms, directions, and functionality are all subject to change and may be changed by SAP SE or its affiliated companies at any time for any reason without notice. The information in this document is not a commitment, promise, or legal obligation to deliver any material, code, or functionality. All forward-looking statements are subject to various risks and uncertainties that could cause actual results to differ materially from expectations. Readers are cautioned not to place undue reliance on these forward-looking statements, and they should not be relied upon in making purchasing decisions. SAP and other SAP products and services mentioned herein as well as their respective logos are trademarks or registered trademarks of SAP SE (or an SAP affiliate company) in Germany and other countries. All other product and service names mentioned are the trademarks of their respective companies. See www.sap.com/trademark for additional trademark information and notices.