



Feature at a Glance

Prevent Component Consumption That Exceeds the Authorized Quantity (CSC-30446)

Ramakoti Konatham, SAP Ariba
Target GA: November 2022

PUBLIC

Introducing: **Prevent Component Consumption That Exceeds The Authorized Quantity**

Customer Challenge

When reporting consumption of components suppliers are able to record quantity of components which are above the quantity of components suggested by the buyer in the sub contracting PO/SA/SAR items.

Buyers would like to have an option to prevent supplier from recording of components above the components provided in PO/SA/SAR items.

Experience Key Benefits

This would help the buyers and suppliers ensure that the quantity of the components consumed doesn't exceed the suggested quantity of the components in PO/SA/SAR items by the buyer.

Audience:

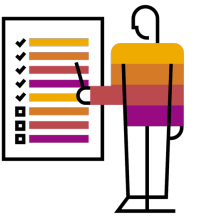
- Buyers and Suppliers

Enablement Model:

- Customer Configured

Applicable Solutions:

- SAP Ariba Supply Chain Collaboration



Prerequisites, Restrictions And Cautions

Prerequisites

- SAP Ariba Supply Chain Collaboration entitlement needs to be enabled to use the capability.

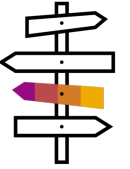
Restrictions

- When a new component is added during the component consumption which is not part of purchase order(PO) / scheduling agreement(SA) / scheduling agreement release(SAR) item it will be ignored.
- The validation of components is not supported for ASN upload via excel.

Cautions

- The validation will not happen in some cases when there is missing batch information between PO and ASN.

User Story

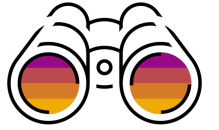


The buyers and suppliers are collaborating using sub contracting PO / SA / SAR. The order document from the buyer to the supplier comes with BOM data providing details of the quantity of components to be consumed to make the finished products.

As the supplier starts producing the finished product ordered by the buyer and

- Creates an advanced ship notice(ASN)
- Reports the components consumed from the PO

the buyer would like to prevent the supplier from consuming more quantity of the components than the quantity suggested in the PO/SA/SAR item.



Feature Details

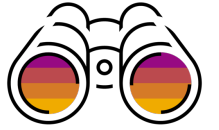
New Transaction Rule To Enable the Check For Consumed Component Quantity

Component Consumption Rules

1

- Do not allow consumption to exceed balance quantity in component inventory.
- Require all quantities of consumed components in a ship notice not to exceed the component quantities in the related purchase order, scheduling agreement, or scheduling agreement release.
- Require buyer batch matching in component inventory.
- Require suppliers to provide a unique asset serial number for each purchase order line item with consumed components.
- Require the total count of shipment serial numbers to not exceed the total quantity shipped for line items with consumed components.
- Require suppliers to provide asset serial numbers for the total shipped quantity of line items with consumed components.

1. The highlighted newly introduced transaction rule is available for buyer under “Component Consumption Rules” section should be enabled to validate the component being consumed against the component quantity suggested in the PO/SA/SAR item.



Feature Details

Check For Consumed Quantity Performed When Creating an ASN

Line #	No. Schedule Lines	Part #	Customer Part #	Type	Category	Return	Revision Level	Qty (Unit)	Need By	Unit Price	Subtotal	Customer Location
10	1	SupPartID_Item1	BuyPartID_Item1	Material Invoicing not possible	Subcontract			110.000 (PCE)	29 Nov 2022	\$10.00 USD	\$1,100.00 USD	Summary

Description: Antenna Assembly

Retail Details

Product EAN/UPC: 123456

Status

110.000 Unconfirmed

Control Keys

Order Confirmation: not allowed
 Ship Notice: allowed
 Invoice: is ERS
 Invoice Verification Type: goods receipt

Schedule Lines [Hide Schedule Line Details](#)

Schedule Line #	Delivery Date	Ship Date	Quantity (Unit)	Customer Proposed Qty (Unit)	Customer Proposed Delivery Date
10	15 Oct 2022 9:00 AM PDT		110 (PCE)		

[Hide Components](#)

Components

Line	Customer Part # / Description	Customer Batch #	Part #	Batch #	Date Required	Qty (Unit)
compID_It1SL1_001	BuyPartID_It1SL1_SC01 <i>SubcontractingComponent 1</i>		SupPartID_It1SL1_SC01		2 Sep 2022 9:00 AM PDT	10 (PCE)
compID_It1SL1_002	BuyPartID_It1SL1_SC02 <i>SubcontractingComponent 2</i>		SupPartID_It1SL1_SC02		2 Sep 2022 9:00 AM PDT	20 (PCE)
compID_It1SL1_003	BuyPartID_It1SL1_SC03 <i>SubcontractingComponent 3</i>		SupPartID_It1SL1_SC03		2 Sep 2022 9:00 AM PDT	40 (PCE)
compID_It1SL1_004	BuyPartID_It1SL1_SC04 <i>SubcontractingComponent 4</i>		SupPartID_It1SL1_SC04		2 Sep 2022 9:00 AM PDT	40 (PCE)



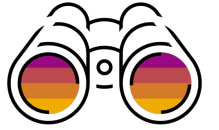
1. Components for item 10(having one schedule line with number 10) of a subcontracting PO sent by the buyer to the supplier.

Other Information

External Line Number: 10
Estimated days for inspection: 0

Feature Details

Check For Consumed Quantity Performed When Creating an ASN



SAP Business Network Enterprise Account

Create Ship Notice

Order No.	Line No.	Part No.	Customer Part No.	Qty	Unit	Need By	Ship By	Unit Price	Subtotal	Customer Location
1507ProdSan2	10	SupPartID_Item1	BuyPartID_Item1	110.000	PCE	29 Nov 2022		\$10.00 USD	\$1,100.00 USD	3000

Description: Antenna Assembly

SHIPMENT STATUS
1. Shipping 110 PCE

Consumed Components

Line	Customer Part No. / Description	Customer Batch No.	Part No.	Batch No.	Quantity	Unit	Serial Number	Actions
1	BuyPartID_IT1SL1_SC01	<input type="text"/>	SupPartID_IT1SL1_SC01	<input type="text"/>	<input type="text" value="10"/>	PCE	0/10	Actions
SubcontractingComponent 1								
2	BuyPartID_IT1SL1_SC02	<input type="text"/>	SupPartID_IT1SL1_SC02	<input type="text"/>	<input type="text" value="23"/>	PCE	0/23	Actions
SubcontractingComponent 2								
3	BuyPartID_IT1SL1_SC03	<input type="text"/>	SupPartID_IT1SL1_SC03	<input type="text"/>	<input type="text"/>	PCE	0/0	Actions
SubcontractingComponent 3								
4	BuyPartID_IT1SL1_SC04	<input type="text"/>	SupPartID_IT1SL1_SC04	<input type="text"/>	<input type="text"/>	PCE	0/0	Actions
SubcontractingComponent 4								

1

2

Quantity of component to consume exceeds the remaining allowed quantity (20) for consumption for the order item.

Add Component Copy Order Quantities Clear All Quantities

RETAIL DETAILS

Product EAN/UPC:

Best Before:

Expires By:

Free Goods Quantity: Unit:

European Waste Catalog ID:

Color: Code:

Size: Code:

Grade: Code:

Quality: Code:

While reporting the component consumption information when creating ASN for the PO the supplier

1. Entered the quantity 10 for the component as mentioned in the PO and the quantity was accepted.
2. Entered the quantity 23 for the component which is above the quantity 20 mentioned in the PO an error message “Quantity of component to consume exceeds the remaining allowed quantity (20) for consumption for the order item.” is displayed.

Thus preventing over consumption of components.



Feature Details

Check For Consumed Quantity Performed When Reporting Consumption From PO/SA/SAR

Document No.: CONS092701
Creation Date: 27 Sep 2022

Additional Fields
Comments:

Attachments
The total size of all attachments cannot exceed 10MB
Choose File No file chosen Add Attachment

Order Items

Order ID	Item	Customer Part No. / Description	Customer Batch No.	Part No.	Batch No.
1507ProdSan2	10	BuyPartID_Item1		SupPartID_Item1	

Antenna Assembly
 Consumption is complete.

Consumed Components

Line	Customer Part No. / Description	Customer Batch No.	Part No.	Batch No.	Quantity	Un	
1	BuyPartID_IT1SL1_SC01		Look Up	SupPartID_IT1SL1_SC01		10	P
SubcontractingComponent 1							
2	BuyPartID_IT1SL1_SC02		Look Up	SupPartID_IT1SL1_SC02		23	P
! Quantity of component to consume exceeds the remaining allowed quantity (20) for consumption for the order item							
SubcontractingComponent 2							
3	BuyPartID_IT1SL1_SC03		Look Up	SupPartID_IT1SL1_SC03			P
SubcontractingComponent 3							

While reporting the component consumption information for the PO the supplier

1. Entered the quantity 10 for the component as mentioned in the PO and the quantity was accepted.
2. Entered the quantity 23 for the component which is above the quantity 20 mentioned in the PO an error message “Quantity of component to consume exceeds the remaining allowed quantity (20) for consumption for the order item.” is displayed.

Thus preventing over consumption of components.

Follow us



www.sap.com/contactsap

© 2022 SAP SE or an SAP affiliate company. All rights reserved.

No part of this publication may be reproduced or transmitted in any form or for any purpose without the express permission of SAP SE or an SAP affiliate company.

The information contained herein may be changed without prior notice. Some software products marketed by SAP SE and its distributors contain proprietary software components of other software vendors. National product specifications may vary.

These materials are provided by SAP SE or an SAP affiliate company for informational purposes only, without representation or warranty of any kind, and SAP or its affiliated companies shall not be liable for errors or omissions with respect to the materials. The only warranties for SAP or SAP affiliate company products and services are those that are set forth in the express warranty statements accompanying such products and services, if any. Nothing herein should be construed as constituting an additional warranty.

In particular, SAP SE or its affiliated companies have no obligation to pursue any course of business outlined in this document or any related presentation, or to develop or release any functionality mentioned therein. This document, or any related presentation, and SAP SE's or its affiliated companies' strategy and possible future developments, products, and/or platforms, directions, and functionality are all subject to change and may be changed by SAP SE or its affiliated companies at any time for any reason without notice. The information in this document is not a commitment, promise, or legal obligation to deliver any material, code, or functionality. All forward-looking statements are subject to various risks and uncertainties that could cause actual results to differ materially from expectations. Readers are cautioned not to place undue reliance on these forward-looking statements, and they should not be relied upon in making purchasing decisions.

SAP and other SAP products and services mentioned herein as well as their respective logos are trademarks or registered trademarks of SAP SE (or an SAP affiliate company) in Germany and other countries. All other product and service names mentioned are the trademarks of their respective companies.

See www.sap.com/copyright for additional trademark information and notices.