



Feature at a Glance

Ability to manage site parameters with Intelligent Configuration Manager (ICM)

Arundhati Kumar, SAP Ariba
Target GA: Feb, 2020

CONFIDENTIAL

Feature at a Glance

Ease of implementation



Low touch / simple

Geographic relevance



Global

Introducing: **Ability to manage site parameters with Intelligent Configuration Manager (ICM)**

Customer challenge

Our partners and customers currently cannot manage their environments or configure application features across various SAP Ariba solutions.

- Configuration is currently managed through SRs and provide no audit trail for what was done, when it was done and by whom
- There is currently no mechanism to package and transport changes across environments
- Only Ariba personnel (Delivery and Support) can apply the configurations

Meet that challenge with **SAP Ariba**

Provide a persona-based common UI for customer administrators to allow for the following services:

- Easily **configure** application features
- **Analyze** and **audit** changes within your environments
- **Migration** (from environment to environment)

Experience key benefits

- Increased Visibility
 - Audit Controls
 - Notifications
 - Approval Workflows
- Faster Deployment Time & Reduced SR Volume
- Improve Quality and Stability
 - Analyze and audit changes
 - Fully Automated Migrations
- Phase 1 - ~227 Total Self-Service parameters
- Increasing current capability by ~150%

Solution area

SAP Ariba Buying and Invoicing
SAP Ariba Sourcing and Contracts

Implementation information

This feature is **automatically on** for all customers with the applicable solutions and is ready for immediate use.

Prerequisites

To access Intelligent Configuration Manager, you must be a member of the Customer Administrator group.

Feature at a Glance

Introducing: **Ability to manage site parameters with Intelligent Configuration Manager (ICM)**

ICM Vision:

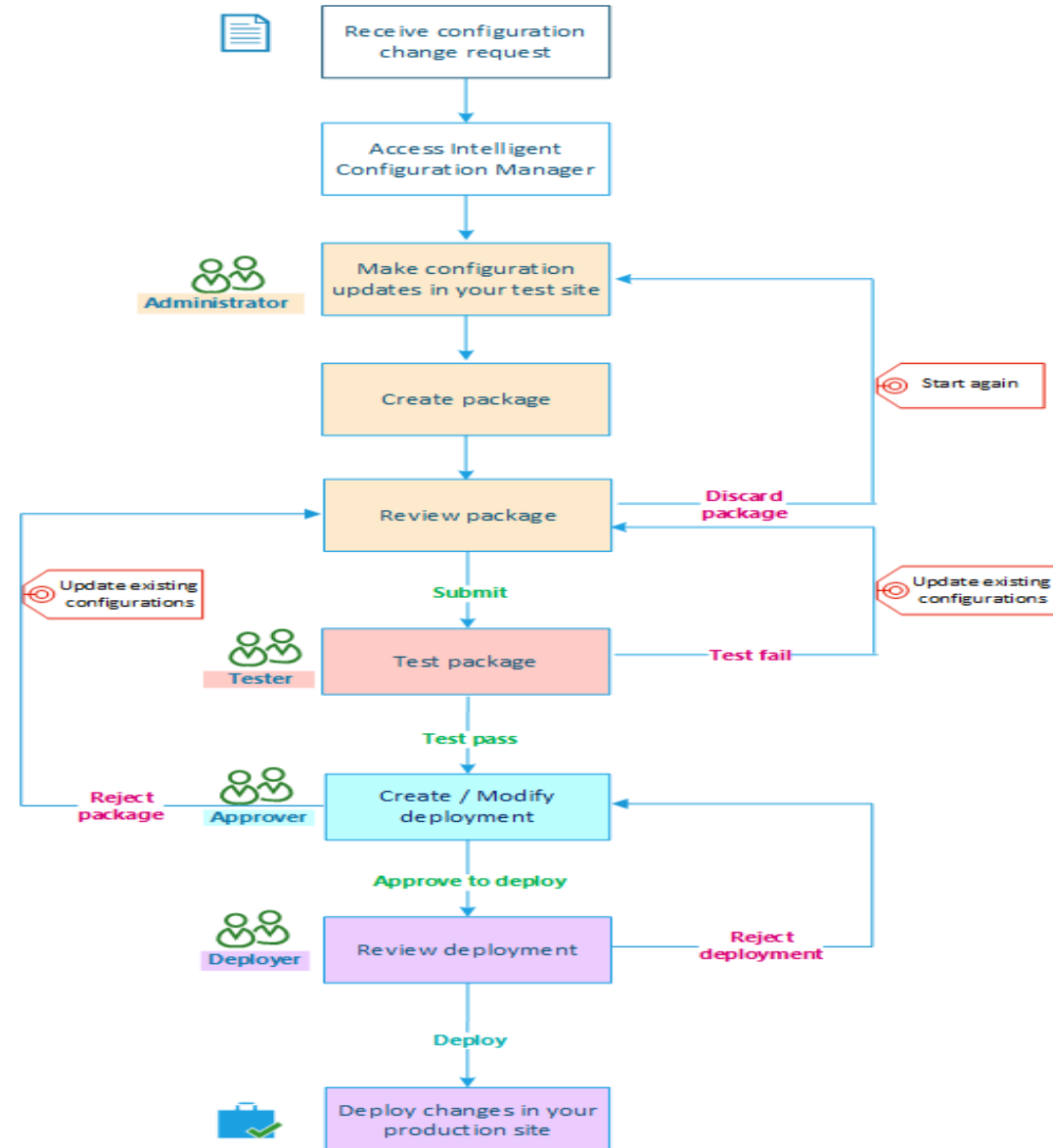
SAP Ariba's Intelligent Configuration Manager will iteratively give our customers and partners ownership of their environments and configurations with powerful tools and intelligence.

- **First step:** Expose customer friendly parameters with ability to package and transport them from test to prod.
- **Later:** Layer in more complex configurations, customizations and templization
- **End goal** is to have integration into the Autonomous Procurement Data Platform (APDP) to intelligently suggest configurations based on leading best practices allowing for autonomous deployments

ICM Workflow for Phase 1 Release

2002 release GA details:

- 1 Persona (Customer Admin)
- View/Update ~227 Self-Service Parameters
- Ability to package parameter, approve changes and deploy in test/prod.
- Workflow for changes:
 - Update Parameter(s)
 - Create Package
 - Review, Test and Approve
 - Create Deployment
 - Deploy from Test to Prod



Feature at a Glance

Go To Market: Intelligent Configuration Manager Available Resources

- Updated Customer Friendly Names & Descriptions for all [Self-Service Parameters](#)
 - All documentation will be translated
- Online Training (available at GA)
- Frequently Asked Questions (available at GA)
- Updated content on Ariba.com – [Intelligent Configuration Manager Admin guide](#) and Release Guide (available at GA)
- Product Demo (available at GA)
- Datasheet (available at GA)
- Podcast (available at GA)

NOTE: A knowledge article be will available on Connect with a complete listing of all available resources for ICM.