



# Feature at a Glance

## Bill of Materials (BOM) Comparison

Badrinath Waiker, SAP Ariba  
Target GA: February, 2019

CONFIDENTIAL

## Feature at a Glance

# Introducing: Bill of Materials (BOM) Comparison

Ease of implementation

Geographic relevance



Low touch / simple



Global

## Customer challenge

With the changing BOM design and changing supplier quotes for part pricing, customers today find it difficult to compare and track the changes over a period of time related to BOM structure and part pricing.

## Meet that challenge with SAP Ariba

SAP Ariba introduces the ability to compare and review:

- Two different BOMs, usually similar BOMs, on structural composition and part pricing
- Same BOM to track structural changes and part pricing over a period of time

The changes to the BOM structure and part pricing are highlighted with color codes.

## Experience key benefits

- Better **user experience** with the added advantage to compare and track changes with Ariba solution
- **Effectiveness** in reporting and decision making

## Solution area

SAP Ariba Strategic Sourcing Suite/Product Sourcing

## Implementation information

This feature is **automatically on** for all customers with the applicable solutions and is ready for immediate use.

## Prerequisites and Limitations

The feature is applicable only with Product sourcing and BOMs being used.

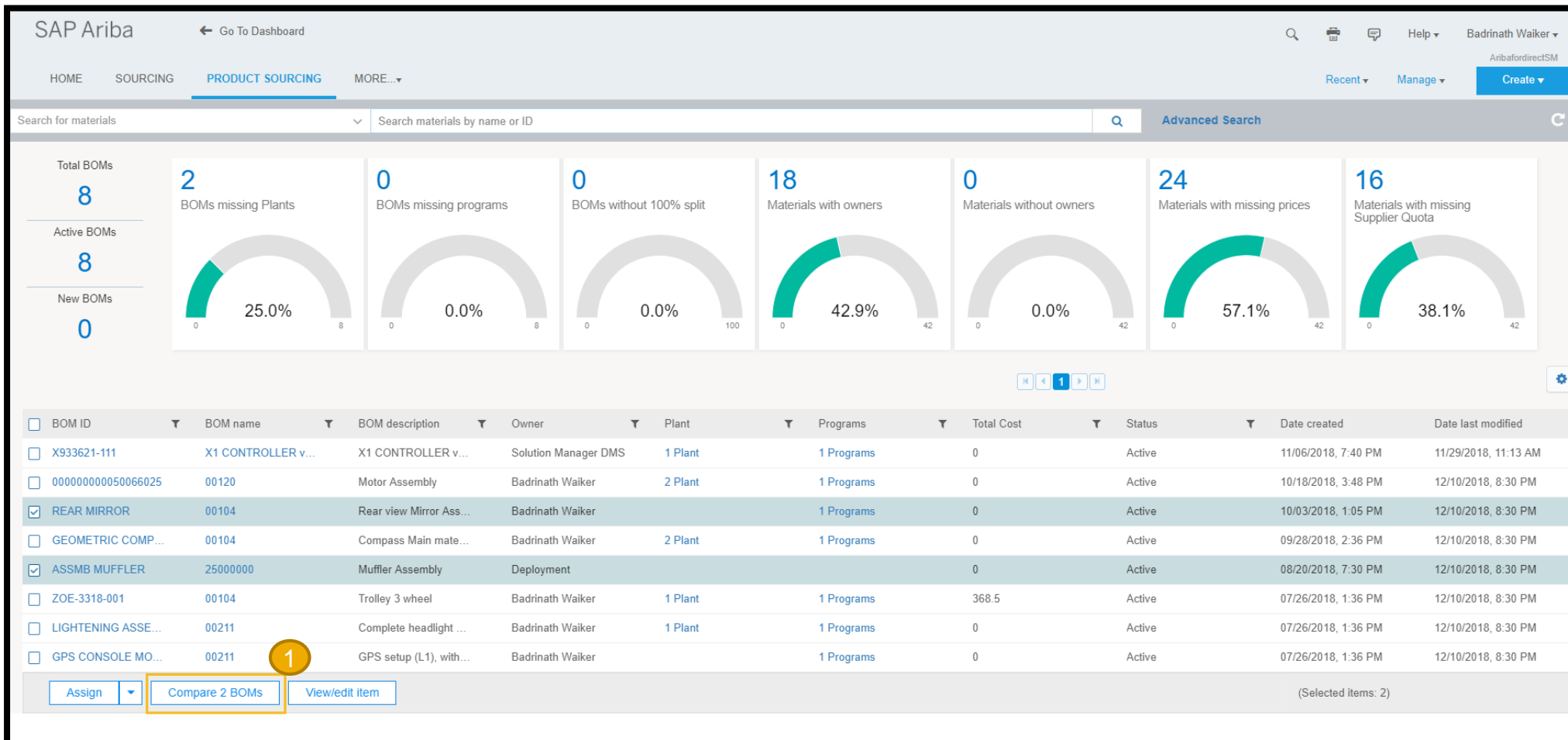
Users should belong to Materials Manager or Materials viewer groups.

# Feature at a Glance

## Introducing: Bill of Materials (BOM) Comparison

### Detailed feature information

When the feature is enabled the user gets the ability to select and compare BOMs on the product sourcing dashboard



- 1
- Product sourcing dashboard now has the feature to compare 2 BOMs
  - Though the users can select any 2 BOMs for comparison, the feature is designed to compare 2 similar BOMs that makes business sense

# Feature at a Glance

## Introducing: Bill of Materials (BOM) Comparison

SAP Ariba

Go To Dashboard

HOME SOURCING **PRODUCT SOURCING** MORE...

Recent Manage Create

Back 00104

Version 00004148\_01

Last updated at 12-10-2018 07:00:01

Total cost \$368.50000

Plant Ariba SM

Part type

Product ID ZOE-3318-001

Program Launching 2 new products next year

☐ BOM buy view

<input checked="" type="checkbox"/>	<input type="checkbox"/> Level	<input type="checkbox"/> Costing level	<input type="checkbox"/> Material Name	<input type="checkbox"/> Material Description	<input type="checkbox"/> Material Number	<input type="checkbox"/> Suppliers	<input type="checkbox"/> Quantity	<input type="checkbox"/> Unit Of
<input checked="" type="checkbox"/> 1	<input type="checkbox"/> 1	N	00104	Trolley 3 wheel	ZOE-3318-001	SK Sheet Metal	1	
<input checked="" type="checkbox"/> 2	<input type="checkbox"/> 2	N	00104	Metal Platform	ZOE-3418-002	SK Sheet Metal	1	EA
<input type="checkbox"/> 3	<input type="checkbox"/> 3	N	00104	Steel sheet 12mm	SKE-3418-003	SK Sheet Metal	2.5	FT2
<input type="checkbox"/> 3	<input type="checkbox"/> 3	N	00104	Semi Gloss Gasket	SKE-3419-003	SK Sheet Metal	3	EA
<input checked="" type="checkbox"/> 2	<input type="checkbox"/> 2	N	00104	Wheel housing	ZOE-3518-002	SK Sheet Metal	3	EA
<input checked="" type="checkbox"/> 3	<input type="checkbox"/> 3	N	00104	Side Piece	SKE-3518-003	SK Sheet Metal	2	EA
<input type="checkbox"/> 4	<input type="checkbox"/> 4	Y	00104	MS flat 80x80	PKE-3518-004	SK Sheet Metal	1.5	FT2
<input type="checkbox"/> 4	<input type="checkbox"/> 4	Y	00104	Square nut	PKE-3519-004	SK Sheet Metal	5	EA

Assign

Get quote

Export to Excel

BOM split

Compare

BOM detail view – ability to compare a single BOM and track changes over a period of time

# Feature at a Glance

## Introducing: **Bill of Materials (BOM) Comparison**

Once users select a BOM for comparison, the UI will guide the users on selection page

1 Select Plants on either BOMs for comparison

2 Select starting date for comparison and tracking changes

3 Compare

SAP Ariba

Go To Dashboard

HOME SOURCING **PRODUCT SOURCING** MORE...

Recent Manage Create

Badrinath Walker

AribaforDirectSM

### Compare BOM

Engine 3318-001 Assembly vs. Engine 3318-001 Assembly

Item	Description	Plant	Quantity	Unit	Material	Material Description	Material Type	Material Status
1.1	Engine 3318-001 Assembly	Engine 3318-001 Assembly	1	EA	Engine 3318-001 Assembly	Engine 3318-001 Assembly	Engine 3318-001 Assembly	Engine 3318-001 Assembly
1.2	Engine 3318-001 Assembly	Engine 3318-001 Assembly	1	EA	Engine 3318-001 Assembly	Engine 3318-001 Assembly	Engine 3318-001 Assembly	Engine 3318-001 Assembly
1.3	Engine 3318-001 Assembly	Engine 3318-001 Assembly	1	EA	Engine 3318-001 Assembly	Engine 3318-001 Assembly	Engine 3318-001 Assembly	Engine 3318-001 Assembly
1.4	Engine 3318-001 Assembly	Engine 3318-001 Assembly	1	EA	Engine 3318-001 Assembly	Engine 3318-001 Assembly	Engine 3318-001 Assembly	Engine 3318-001 Assembly
1.5	Engine 3318-001 Assembly	Engine 3318-001 Assembly	1	EA	Engine 3318-001 Assembly	Engine 3318-001 Assembly	Engine 3318-001 Assembly	Engine 3318-001 Assembly
1.6	Engine 3318-001 Assembly	Engine 3318-001 Assembly	1	EA	Engine 3318-001 Assembly	Engine 3318-001 Assembly	Engine 3318-001 Assembly	Engine 3318-001 Assembly
1.7	Engine 3318-001 Assembly	Engine 3318-001 Assembly	1	EA	Engine 3318-001 Assembly	Engine 3318-001 Assembly	Engine 3318-001 Assembly	Engine 3318-001 Assembly
1.8	Engine 3318-001 Assembly	Engine 3318-001 Assembly	1	EA	Engine 3318-001 Assembly	Engine 3318-001 Assembly	Engine 3318-001 Assembly	Engine 3318-001 Assembly
1.9	Engine 3318-001 Assembly	Engine 3318-001 Assembly	1	EA	Engine 3318-001 Assembly	Engine 3318-001 Assembly	Engine 3318-001 Assembly	Engine 3318-001 Assembly
1.10	Engine 3318-001 Assembly	Engine 3318-001 Assembly	1	EA	Engine 3318-001 Assembly	Engine 3318-001 Assembly	Engine 3318-001 Assembly	Engine 3318-001 Assembly

Compare BOM

BOM ID: ZOE-3318-001

Name: 00104

Plant: Ariba SM

Date: 12/18/2018

Cancel Compare

# Feature at a Glance

## Introducing: Bill of Materials (BOM) Comparison

HOME SOURCING CONTRACTS **PRODUCT SOURCING** MORE...

Recent Manage Create

### Compare BOM

MAT6\_XBOX\_SHORT\_15\_012 vs. MAT6\_XBOX\_SHORT\_15\_012

**BOM comparison summary**

1 Additions 0 Deletions 7 Changed

**Ability for users to restrict the level of comparison**

Show BOM differences to level: 5

Total cost	Contract MFR	Date	Programs	Total cost	Contract MFR	Date	Programs		
\$0.00000	China Plant	12/18/2018	<a href="#">1 Programs</a>	\$0.00000	India Plant	8/06/2018	<a href="#">1 Programs</a>		
Level	BOM ID	BOM name	BOM description	Owner	Level	BOM ID	BOM name	BOM description	Owner
▼ 1	XT150000-012	MAT6_XBOX_SHOR...	LONG6_XBOX_DES...	Max Olson	▼ 1	XT150000-012	MAT6_XBOX_SHOR...	LONG6_XBOX_DES...	Max Olson
> 2	XT150000-005	MAT6_XBOX_SHOR...	LONG6_XBOX_DES...	Arnold Davis	> 2	XT150000-005	MAT6_XBOX_SHOR...	LONG6_XBOX_DES...	Arnold Davis
▼ 2	XT150000-013	MAT6_XBOX_SHOR...	LONG6_XBOX_DES...	Arnold Davis	▼ 2	XT150000-013	MAT6_XBOX_SHOR...	LONG6_XBOX_DES...	Arnold Davis
<b>Added item!</b>				3	ITEM-1545126273305	Mat1234	Raw materials	Arnold Davis	
3	XT150000-003	MAT6_XBOX_SHOR...	LONG6_XBOX_DES...	Arnold Davis	3	XT150000-003	MAT6_XBOX_SHOR...	LONG6_XBOX_DES...	Arnold Davis
3	XT150000-004	MAT6_XBOX_SHOR...	LONG6_XBOX_DES...	Arnold Davis	3	XT150000-004	MAT6_XBOX_SHOR...	LONG6_XBOX_DES...	Arnold Davis
2	XT150000-014	MAT6_XBOX_SHOR...	LONG6_XBOX_DES...	Arnold Davis	2	XT150000-014	MAT6_XBOX_SHOR...	LONG6_XBOX_DES...	Arnold Davis

**Color codes to highlight addition, deletion and modification**