



Feature at a Glance

BOM Volume Integration

Badrinath Waiker, SAP Ariba
Target GA: February, 2019

CONFIDENTIAL

Feature at a Glance

Introducing: BOM Volume Integration

Ease of implementation  Some complexity
Geographic relevance  Global

Customer challenge

Customers have forecasted the requirements for manufacturing certain products and have also estimated the volumes required for associated BOMs. While the customer creates the sourcing event in Ariba on these BOM, the challenges faced by the users are to:

- **Manually** input the BOM volumes per event
- **Manually** calculate & update the corresponding sub-assemblies and child parts

Meet that challenge with SAP Ariba

SAP Ariba addresses the challenge faced by the users through a newly introduced features BOM volume integration by:

- **Automatically integrating** BOM volume data from an external system into Ariba product sourcing application through a webservice
- **Automatically** cascade corresponding volume information to all child parts and sub-assemblies

Experience key benefits

- Reduced processing time by totally automating the volume integration process
- Better quality by reducing user efforts to manually update volume across assemblies and sub-assemblies
- Enhanced UI – view the volume data in material 360

Solution area

Strategic Sourcing Suite/Product Sourcing

Implementation information

To have this feature enabled, please have your Designated Support Contact (DSC) submit a **Service Request (SR)**

Prerequisites and Limitations

Webservice to be established to an external system for volume data

Feature at a Glance

Introducing: BOM Volume Information

Detailed feature information

With this features enabled, product sourcing automatically integrates the volume data on the respective BOM

Ariba receives the forecast/rebate volume on the top level material and cascades that data to child parts

The screenshot displays the SAP Ariba interface for the BOM detail page of MAT_XBOX_SHORT_011. The top navigation bar includes links for HOME, SOURCING, CONTRACTS, and PRODUCT SOURCING. The main header shows the material name MAT_XBOX_SHORT_011 and its version 19872101_01. Below the header, there are fields for Total cost (\$0.00000), Contract MFR (Werk 0001), Part type (Consigned type), Product ID (XZ10000-011), and Program (3 Programs). A 'Volume' section is highlighted with a yellow box, containing a 'View volume info' link and a table showing volume data:

Type	Volume
Forecast	25
rebate	12

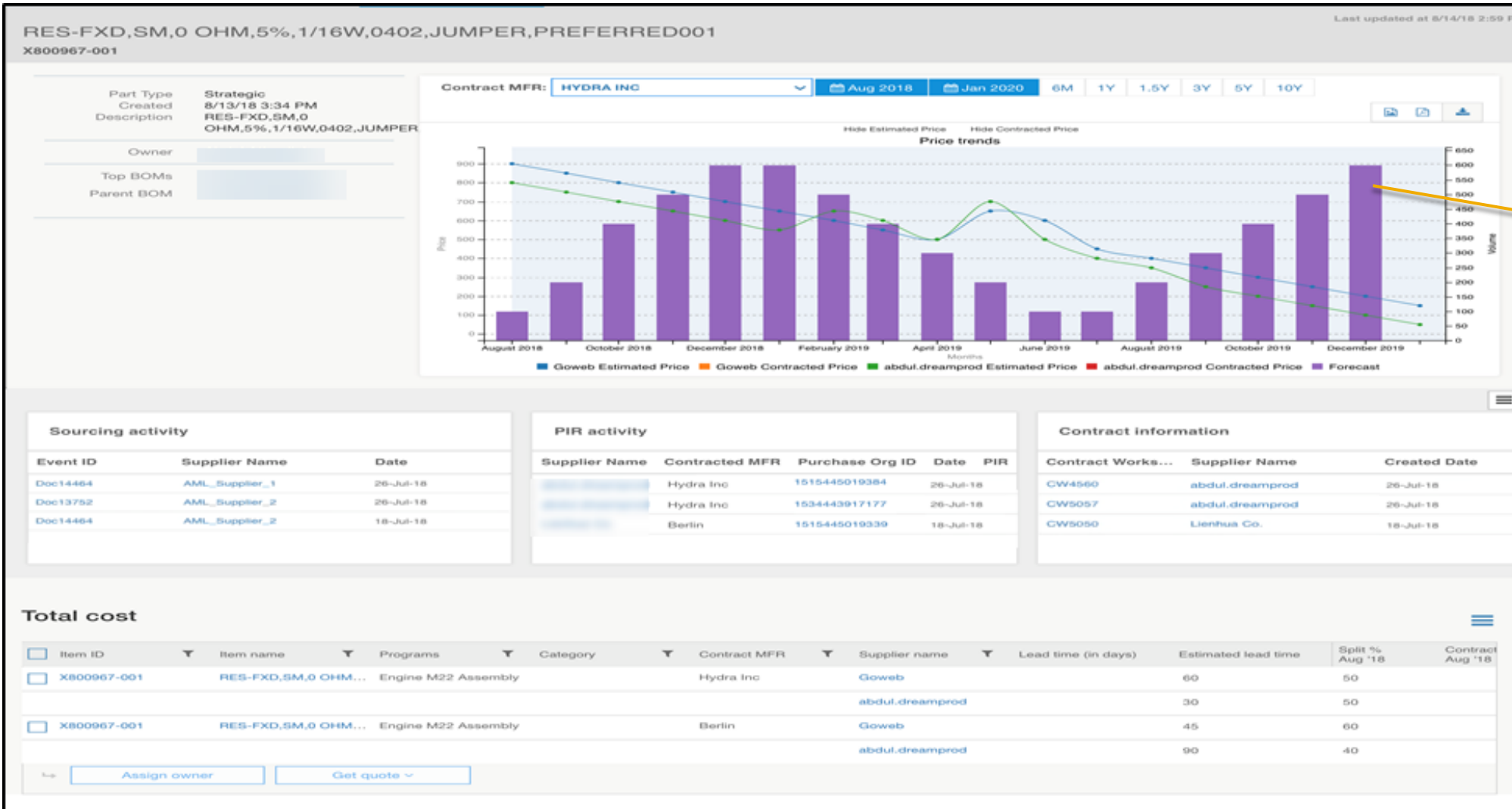
Below the volume section, there is a 'BOM buy view' checkbox and a table with columns for Level, Costing level, Item name, Item description, Item ID, Part Type, Suppliers, and Quantity. The table shows one item with Level 1, Costing level N, Item name MAT_XBOX_SHORT_011, Item description LONG_XBOX_DESC_011, Item ID XZ10000-011, Part Type Consigned type, Suppliers 2 Supplier, and Quantity 1. At the bottom, there are buttons for Assign, Get quote, Export to Excel, and BOM split.

Change in the UI with volume integration feature enabled:

- The BOM detail page now displays the volume information with volume type

Feature at a Glance

Introducing: BOM Volume Integration



- Volume information type
- Value by month
- Validity period item 360 view

Feature at a Glance

Introducing: **BOM Volume Integration**

MORE...▼

Volume Integration

Include Volumes in your Quote? ☐ Yes ☒ No

Cancel Continue

CONTRACTS PRODUCT SOURCING MORE...▼

Volume Integration

Include Volumes in your Quote? ☒ Yes ☐ No

Volume Type:

Across all BOMs?

Cancel Continue

PRODUCT SOURCING MORE...▼

Volume Integration

Include Volumes in your Quote? ☒ Yes ☐ No

Volume Type:

Across all BOMs? ☒ Yes ☐ No

Cancel Continue

When the volume information is available, every time users attempt to request a quote

- 1 Users can choose if they wish to use volume information
- 2 Users can choose if they wish to apply and cascade the volume information across all child parts/sub-assemblies
- 3 Finally, users can choose type of volume information