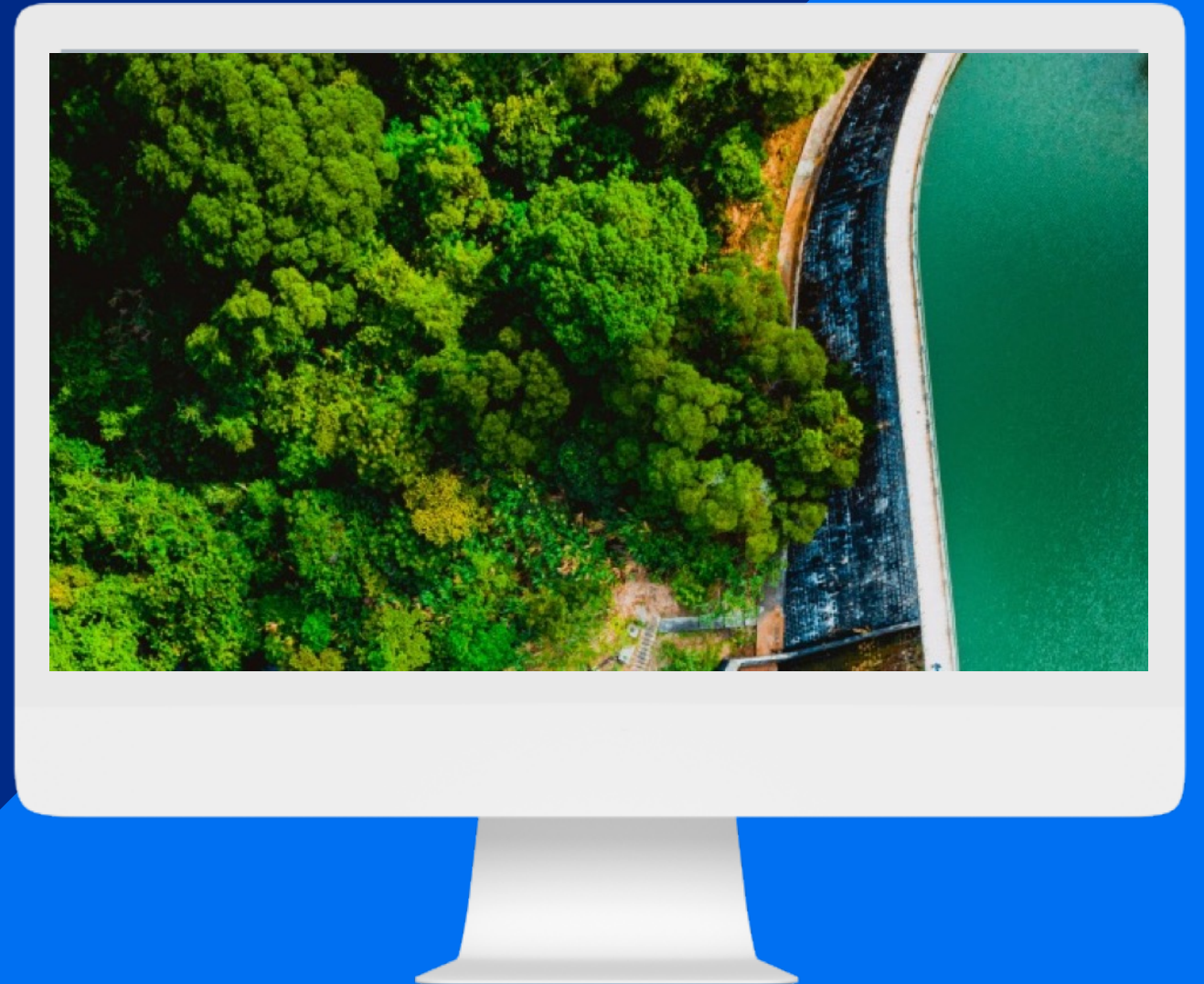


Feature at a Glance

Improvements to the
Automatic Start of
Supplier Registration

SM-41780

Target GA: February 2024



SAP

Improvements to the Automatic Start of Supplier Registration

Description

- With this feature, supplier registrations are started automatically in the following two situations:
 - When primary supplier contacts are added or imported for the very first time into SAP Ariba Supplier Lifecycle and Performance, and
 - When supplier requests are externally approved in an integrated SAP Master Data Governance - Suppliers (MDG-S) system, and confirmed in SAP Ariba Supplier Lifecycle and Performance

Customer benefit

- The invitation process is able to be triggered more efficiently which reduces manual effort and improves overall efficiency

User

- Buyer

Enablement model

- Customer Configured

Applicable solution(s):

- SAP Ariba Supplier Lifecycle and Performance

Prerequisites, Restrictions, Cautions



- A member of the **Customer Administrator Administration** group must enable the parameter **Application.SM.AutoStartRegistration** in the **Intelligent Configuration Manager** workspace.
- To enable or disable self-service configuration parameters in the **SM Administration > Configuration Parameters** workspace, you must be a member of the **Customer Administrator** and **SM Ops Administrator** group.
- A customer administrator must ensure that the parameter **Application.SM.VendorContactPushTaskEnabled** is enabled in **Manage > Administration > Customization Manager > Parameters**.
- For SAP Ariba Supplier Information and Performance Management, this feature requires the "new architecture."

Feature details

- With this feature, supplier registrations are started automatically in the following two situations:
 - when primary supplier contacts are added or imported for the very first time, and
 - when supplier requests are externally approved in an integrated SAP Master Data Governance - Suppliers (MDG-S) system, and confirmed in SAP Ariba Supplier Lifecycle and Performance
- If you add the first contact to a supplier 360° profile, that contact automatically becomes the primary supplier contact. When a registration invitation is sent automatically to the primary supplier contact, the **Invite** button is disabled. However, when an in-progress registration is canceled, the **Invite** button becomes enabled after some time, and you can manually invite the supplier.
- If you cancel an existing registration and subsequently inactivate the primary contact, the registration is automatically sent again when you add a new primary contact.

The screenshot displays the SAP Ariba Supplier Lifecycle and Performance interface. On the left, a sidebar shows navigation options: Summary, Contacts, ERP data, Certificates, Hierarchy, Activity log, Business activity, Supplier request, Registration (highlighted), and Questionnaires. The main area shows the 'Add Supplier Contact' form with fields for First Name, Middle Name, Last Name, Title, Email Address, Mobile Phone, and Office Phone. A 'Primary Contact' toggle is visible. A modal window titled 'Registration' is open, showing details: Invited by (aribasystem), Invited on (November 28, 2023), Registration status (Invited), Supplier recipient, Email, and Office phone. Below the modal is a 'Process Flow' diagram with four steps: Invited (green circle), In Registration (blue circle), Approval for Supplier registration questionnaire-New (dashed line), and Registered (grey circle). A 'Cancel' button is present in the top right of the modal.

Thank you.

