



SAP Ariba 

SAP Ariba Quarterly Release Updates, 2211 (Q4- 2022)

SAP Ariba Strategic Sourcing and Supplier Management Solutions.

PUBLIC

 Run Simple

Agenda

- Background & Objectives
- Meet one of SAP's Customer Success Partners (CSP)
- 2211 (Q4-2022) Feature Releases
- Features at a Glance & Demo's
- Appendix

Background & Objectives



Background & Objectives

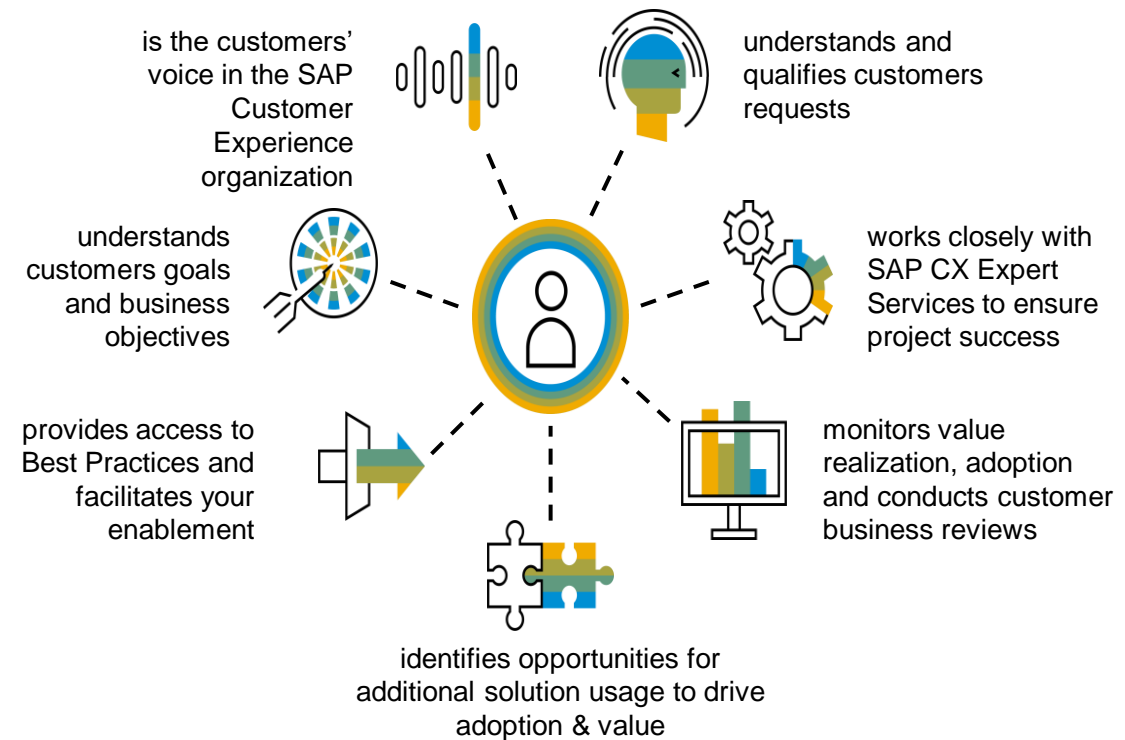
- SAP Ariba releases a number of innovations on Quarterly basis across the Ariba Solution Portfolio
- In most cases, Ariba Customers are not able to keep track of these releases or understand which of these new innovations might be useful for addressing their current pain points
- The objective of this session is to provide a brief synopsis of the Ariba innovations on a quarterly basis to help Ariba Customers keep up to date with the new features & functionalities released by SAP Ariba
- In this session we will provide a summary of these features at a high level and deep dive into few key features only. If there is any specific feature that you are interested in deep diving, please reach out to your respective CEE/CSP's for the same

Meet one of SAP's Customer Success Partners (CSP)

Lalit Manchanda



- With SAP since Apr 2012 and moved to SAP Ariba in May 2016.
- Industry Focus: Mining, Oil & Gas, Automotive, Professional Services
- SAP Skills: Procurement and Supply Chain
- Born and brought up in New Delhi. Currently residing in Gurgaon, India
- Prior to CSP role, Lalit played a key role as Advisory consultant to Strategic customers in the region and helped customers in their digital transformation journey
- Enjoy playing badminton, travelling and spending time with family and friends
- Favourite SAP topics:
 - 12 Keys of Success (Project Must-Knows)
 - Value Scorecard
 - New Innovations and focus on Customer success



2211 (Q4-2022) **Feature Releases**



Feature Releases

Features	Description	Feature is available in						Enabling this feature
		SAP Ariba Sourcing	SAP Ariba Contracts	SAP Ariba SIPM	SAP Ariba SLP	SAP Ariba Supplier Risk	SAP Ariba Strategic Sourcing Suite	
Sourcing								
Enhanced pagination support in bid analysis [OPT-3168]	<p>Enhanced pagination support in bid analysis enables buyers using the classic SAP Ariba Sourcing user interface or guided sourcing to:</p> <ul style="list-style-type: none"> • View and select items and suppliers at the parent and child levels • Dynamically paginate the items in the Items table at the parent and child levels 	✓					✓	Automatically On
Bid analysis support for envelope bidding events [OPT-3700]	<p>This feature introduces support for bid analysis functionality in envelope bidding events. Bid analysis is supported in the classic SAP Ariba Sourcing user interface and the guided sourcing user interface and enables buyers to perform bid analysis tasks for RFP events that are in the pending selection, awarded, or completed state.</p>	✓					✓	Automatically On
Creating sourcing requests in guided sourcing [SS-29103]	<p>This feature provides the ability to create sourcing requests in the guided sourcing user interface.</p>	✓					✓	Automatically On

Feature Releases

Features	Description	Feature is available in					Enabling this feature
		SAP Ariba Sourcing	SAP Ariba Contracts	SAP Ariba SIPM	SAP Ariba SLP	SAP Ariba Supplier Risk	
Sourcing							
Enhancements to the Message Board capability in guided sourcing [SS-32884]	<p>This feature introduces enhancements to the messaging capabilities in guided sourcing such as setting recipients for user-created messages, activating or deactivating the creation of ad hoc messages based on specific events and their statuses, and hiding message contents in the email notifications.</p> <p>In full projects, buyer users can copy attachments from the message board to specific projects or subprojects. Unzipping the message attachments from the project message board to the full project area is also now possible.</p>	✓				✓	Automatically On
English forward auctions in guided sourcing [SS-32886]	<p>This feature enables guided sourcing users to create, monitor, and award English forward auctions. Users can initiate forward auctions to sell goods to buyers offering the highest price. Users can also initiate forward auctions with bid transformation to add cost terms (not disclosed to participants) to participant bids.</p>	✓				✓	Automatically On
Support for Dutch forward auctions in guided sourcing [SS-32890]	<p>This feature adds support for Dutch forward auctions in the guided sourcing interface. A new Dutch forward auction template for guided sourcing is introduced to support Dutch forward auctions.</p>	✓				✓	Automatically On
Make items read-only for event participants in guided sourcing [SSR-4170]	<p>This feature allows you to make an item that has already been quoted for by suppliers read-only so that suppliers cannot change the quoted price.</p>	✓				✓	Automatically On

Feature Releases

Features	Description	Feature is available in						Enabling this feature
		SAP Ariba Sourcing	SAP Ariba Contracts	SAP Ariba SIPM	SAP Ariba SLP	SAP Ariba Supplier Risk	SAP Ariba Strategic Sourcing Suite	
Sourcing and Contract								
Support for replicating purchasing organization master data from SAP S/4HANA Cloud using SAP Master Data Integration [PLMDS-4925]	<p>This feature introduces support for replicating purchasing organization master data into SAP Ariba applications from SAP S/4HANA Cloud using SAP Master Data Integration. In this release, support is available for the PurchasingOrganization v4.0.0 master data object.</p> <p>PurchaseOrg masterdata needs to be loaded separately in ERP and Ariba. With MDI this masterdata can be loaded once and all the Cloud LoB's will get the data</p>	✓	✓				✓	Automatically On

Feature Releases

Features	Description	Feature is available in						Enabling this feature
		SAP Ariba Sourcing	SAP Ariba Contracts	SAP Ariba SIPM	SAP Ariba SLP	SAP Ariba Supplier Risk	SAP Ariba Strategic Sourcing Suite	
Contracts								
SAP Ariba Contracts integration with Icertis Contract Intelligence for SAP Ariba solutions [SC-16239]	Buyers using SAP Ariba Contracts or SAP Ariba Strategic Sourcing Suite can choose to integrate their SAP Ariba Contracts instance with Icertis Contract Intelligence (ICI) for SAP Ariba solutions to leverage the intelligent and flexible contract authoring capabilities offered by ICI. The intelligent contract authoring capabilities offered by ICI include self-service contract management, rule-based contract authoring, dynamic assembly of clauses and documents, and advanced negotiation and collaboration features.		✓				✓	Customer Configured

Feature Releases

Features	Description	Feature is available in						Enabling this feature
		SAP Ariba Sourcing	SAP Ariba Contracts	SAP Ariba SIPM	SAP Ariba SLP	SAP Ariba Supplier Risk	SAP Ariba Strategic Sourcing Suite	
Supplier Management								
Prepopulate region, category, and department values from request or registration to process qualification [SM-30932]	<p>This feature introduces an enhancement that prepopulates commodity, region, and department values in intake forms with entries from supplier request or registration. If a supplier has both a request and a registration with this data, the registration data is used to prepopulate the intake form. Therefore, you no longer have to manually select these values in intake forms while creating process qualifications for your suppliers. However, if you are creating a process qualification for a different matrix combination, you must use the dropdown menu to select the desired matrix values.</p> <p>Commodity, region, and department values in intake forms are prepopulated based on the following inbuilt rules:</p> <ul style="list-style-type: none"> If both supplier request and supplier registration contain identical or different matrix values, the intake form is prepopulated with data from supplier registration. Note: If matrix values from supplier registration are available, they always override values from supplier request. For example, if supplier registration contains only commodity values and supplier request contains commodity, region, and department values, all the matrix values from registration (even empty values) override all the values of supplier request. If a supplier request contains matrix values and supplier registration does not, the intake form is prepopulated with data from the supplier request. If both supplier request and supplier registration do not contain any matrix values, the intake form is prepopulated with default values provided in the template. 				✓		✓	Customer Configured

Feature Releases

Features	Description	Feature is available in						Enabling this feature
		SAP Ariba Sourcing	SAP Ariba Contracts	SAP Ariba SIPM	SAP Ariba SLP	SAP Ariba Supplier Risk	SAP Ariba Strategic Sourcing Suite	
Supplier Management								
Support for bidirectional integration of supplier data with SAP S/4HANA Cloud using SAP Master Data Integration (MDI) [SM-31650]	This feature adds support for bidirectional integration of supplier data between SAP Ariba applications and SAP S/4HANA Cloud using SAP Master Data Integration (MDI). Now, you can also replicate suppliers created in SAP Ariba Applications to SAP S/4HANA Cloud. Previously, only unidirectional synchronization from SAP S/4HANA Cloud to SAP Ariba applications was supported.				✓		✓	Customer Configured
Default content for supplier request and registration questionnaires [SM-31777]	This feature adds default content to the questionnaire survey documents in internal and external supplier requests and supplier registration project templates on new customer sites. Enables users to leverage the default content, which includes required questions and reflects integration best practices. Allows users to start creating projects right away from these templates or customize them to suit your needs.				✓		✓	Automatically On
Default country/region-specific tax ID field data for Tax questions [SM-34629]	This feature adds default country/region-specific tax field data with sample values that defines the tax ID fields that are available in Tax questions for the selected country/region, as well as their field mappings and validation patterns. You can edit this sample data to meet the requirements of an integrated ERP system and ensure that the tax information you collect from suppliers is valid. Previously, since no default data was provided, it was necessary to create it entirely from scratch.				✓		✓	Automatically On
Deletion of integration messages after a retention period [SM-34066]	This feature introduces a retention period after which integration messages in inbound and outbound queues are automatically deleted. The retention period is 365 days for production sites and 180 days for test sites from the message creation timestamp in SAP Ariba.				✓		✓	Automatically On

Feature Releases

Features	Description	Feature is available in						Enabling this feature
		SAP Ariba Sourcing	SAP Ariba Contracts	SAP Ariba SIPM	SAP Ariba SLP	SAP Ariba Supplier Risk	SAP Ariba Strategic Sourcing Suite	
Supplier Management								
Default supplier duplicate checks using Tax answers [SM-33625]	This feature introduces the ability to use Tax answers in default duplicate checks during the internal supplier request creation and approval process. Default duplicate check now compares Tax answers in the supplier request to tax IDs added in other supplier requests, through supplier data import or replication from an integrated ERP system, or in supplier registration questionnaires. Since tax IDs are often unique identifiers for suppliers, including them in default duplicate checks against multiple sources for supplier tax data in your site increases their effectiveness in preventing the creation of duplicate suppliers.				✓		✓	Automatically On
Support for repeatable sections in internal questionnaires and repeatable section enhancements [SM-33647]	This feature adds support for repeatable sections in internal questionnaires, including external questionnaires answered by internal recipients in workflows such as internal registrations. Previously, repeatable sections were only supported in external questionnaires answered by suppliers on Ariba Network. It also adds the ability to compare answers in repeatable sections during version comparison of both internal and external questionnaires.				✓		✓	Automatically On
Improvements to internal questionnaires with visibility conditions [SM-33967]	This feature changes the way visibility conditions are evaluated in internal questionnaires.				✓		✓	Customer Configured
Ability to export and review supplier details before running template upgrade [SM-32437]	This feature provides an option to export and download eligible supplier and project details before running template upgrade.				✓		✓	Automatically On

Feature Releases

Features	Description	Feature is available in						Enabling this feature
		SAP Ariba Sourcing	SAP Ariba Contracts	SAP Ariba SIPM	SAP Ariba SLP	SAP Ariba Supplier Risk	SAP Ariba Strategic Sourcing Suite	
Supplier Risk								
Engagement scores in risk exposure [ARI-16372]	The inherent risk and residual risk in control-based engagement risk assessment projects are now contributing factors to the risk exposure, providing a better view of the total risk associated with doing business with a supplier.					✓		Automatically On
Additional custom fields for supplier risk data [ARI-16778]	The 15 custom fields limit for risk exposure configuration has been changed to allow 300 custom fields across all risk categories. The custom fields can now contribute to the risk exposure, or they can be displayed as information only and not contribute to the risk exposure. Adding additional custom fields and providing flexibility allows customers to bring in a variety of data across the risk categories for monitoring suppliers.					✓		Automatically On
Create Findings within Supplier Risk [ARI-16846]	This feature introduces the ability to create findings from within Supplier Risk. Users can create general findings, or findings specific to engagements, controls, or services.					✓		Customer Configured

Feature Releases

Features	Description	Feature is available in						Enabling this feature
		SAP Ariba Sourcing	SAP Ariba Contracts	SAP Ariba SIPM	SAP Ariba SLP	SAP Ariba Supplier Risk	SAP Ariba Strategic Sourcing Suite	
Supplier Risk								
Enhanced status information for assessments and risk controls [ARI-17416]	This feature changes the risk controls area of the engagement page, and the control review or control details page, to display both control status and review decision consistently. Previously, these pages did not always show both values. It also includes a technical change to ensure consistent assessment status across the user interface, and to derive control status each time it is needed for these pages or the Risk Control Summary report.					✓		Customer Configured
Remove country/region risk as a contributing factor to risk exposure [ARI-17547]	You can now remove country/region risk from the risk exposure for your suppliers. Over the past 2 years, the World Economic Forum (WEF) has paused the Global Competitiveness Index that is used by SAP Ariba Supplier Risk to calculate the country/region risk exposure. Refer to the various WEF reports in the supplier 360° enriched corporate information for the change policy beginning in 2020 due to the pandemic.					✓		Customer Configured
Risk exposure calculation improvements [ARI-18100]	The risk exposure calculation has been updated to be more intuitive and responsive. It distributes the risk exposure more evenly throughout the 1–100 range, manages missing data in a way that doesn't cause the exposure to fluctuate unpredictably, and provides a default risk exposure calculation that you can adjust or reconfigure to your preferences.					✓		Customer Configured

Features at a **Glance**



Feature at a Glance Enhancements to the Guided Sourcing Event Award Process (DM-16813) ([link](#))

Enhancements to the guided sourcing event award process


Description

- This feature introduces multiple enhancements to the guided sourcing event award process, including the ability to send draft award scenarios to external ERP systems, create follow-on documents from an awarded scenario if no follow-on documents were previously created, and create or resend follow-on documents from an awarded scenario multiple times.

Customer benefit

- This feature allows a more flexible awarding process

User

- Buyer 

Enablement model

- This feature is ready for immediate use for all customers with the applicable solutions but requires **customer enablement** steps.

Applicable solutions:

- SAP Ariba Strategic Sourcing Suite

Prerequisites

- This feature is supported in the classic SAP Ariba Sourcing user interface and the guided sourcing user interface. To use this feature in the guided sourcing user interface, your site must have [guided sourcing enabled](#), and you must be a member of the **Category Buyer** group.
- The [Enable guided sourcing integration in 4BL and 4QN integration scenarios for SAP S/4HANA Cloud](#) parameter must be enabled in the Intelligent Configuration Manager.
- To specify if an event remains in the Pending Selection state after awards are submitted for all event items, set the [Automatically change event status to Completed when all items are awarded](#) parameter to **No**.
- To give users the ability to send draft event awards to external ERP systems, enable the [Send draft award scenarios to external ERP systems](#) parameter.
- To give users the ability to send an awarded scenario to an external ERP system multiple times, enable the [Ability to create multiple follow-on documents from an awarded scenario](#) parameter.

You must be a member of one of the following groups:

- **Category Manager**
- **Commodity Manager**
- **Customer Administrator** (access to this group must be approved by SAP Ariba)
- **Event Administrator** (access to this group must be approved by the SAP Ariba Market Coordination Team)
- **Junior Procurement Agent**
- **Junior Sourcing Agent**
- **Limited Event Administrator** (access to this group must be approved by the SAP Ariba Market Coordination Team)
- **Procurement Agent**
- **Sourcing Agent**
- **Sourcing Approver**
- **Sourcing Project Administrator** (access to this group must be approved by the SAP Ariba Market Coordination Team)

Administrator information

This feature adds the following self-service site configuration parameters to the **Intelligent Configuration Manager**:

Name	ID	Description
Send draft award scenarios to external ERP systems	Application.Integration.ExternalSystem.EnableSendDraftQuotes	Enables users to send draft event awards to external ERP systems. For more information, refer to Send draft award scenarios to external ERP systems .
Automatically change event status to Completed when all items are awarded	Application.AQS.AutoEventCompletionWhenAllItemsAwarded	Specifies if an event automatically changes to the Completed state after at least one award is submitted for each item in the event. The default value is Yes ; if set to No , events remain in a Pending Selection status and must be manually closed. For more information, refer to Automatically change event status to Completed when all items are awarded .
Ability to create multiple follow-on documents from an awarded scenario	Application.Integration.ExternalSystem.EnableSendMultipleQuotes	Enables users to send an awarded scenario to an external ERP system multiple times. Users can create multiple follow-on documents from the same award scenario. For more information, refer to Ability to create multiple follow-on documents from an awarded scenario .

Feature details

This feature introduces the following user interface changes:

- When the [Ability to create multiple follow-on documents from an awarded scenario](#) parameter is enabled and the award scenario is in an awarded state, only the **Send prices to external system** button appears in the **Award scenarios** section.
- When the [Send draft award scenarios to external ERP systems](#) parameter is enabled and the award scenario is in a draft state, both the **Award** and **Send prices to external system** buttons appear in the **Award scenarios** section.
- The **Send prices to external system** button shows in the **Award scenarios** section when a scenario is awarded, but not sent to an external system, and if the [Ability to create multiple follow-on documents from an awarded scenario](#) parameter is enabled.
- A new icon appears in the **Award scenarios** section after users click **Send prices to external system** in the **Award scenarios** section.
- The **Hide award info from participants** event rule is now available in guided sourcing event templates. When the **Hide award info from participants** event rule is set to **Yes**, the **Confirm award** dialog box does not show options to send email notifications to suppliers. For more information about guided sourcing event rules, refer to [Guided sourcing RFI and RFP event rules](#).

SAP Ariba Contracts integration with Icertis Contract Intelligence for SAP Ariba solutions SC-16239

[Demo](#)

Feature at a Glance Default Supplier Duplicate Checks Using Tax Answers (SM-33625) [\(Link\)](#)

Default supplier duplicate checks using tax answers

Description

- This feature enables you to use **Tax** answers in default duplicate checks during the internal supplier request creation and approval process.
- Default duplicate check now compares **Tax** answers in the supplier request to tax IDs added in other supplier requests, through supplier data import, replication from an integrated ERP system, or in supplier registration questionnaires.

Customer benefit

- Since tax IDs are often unique identifiers for suppliers, including them in default duplicate checks against multiple sources for supplier tax data in your site increases their effectiveness in preventing the creation of duplicate suppliers.

User

- Buyer

Enablement model

- Automatically On

Applicable solutions:

- SAP Ariba Supplier Lifecycle & Performance
- SAP Ariba Supplier Information and Performance Management
- SAP Ariba Strategic Sourcing Suite

Prerequisites, restrictions, cautions

Prerequisites

- The **Tax** answer type (SM-3891) must be enabled and configured in your site.
- Your internal supplier request must include a **Tax** question mapped to *vendor.taxExt* (for a single question) or *vendor.taxExt[\$index]* (for a question in a repeatable section).
- For default duplicate checking against tax IDs updated in a supplier registration questionnaire, that questionnaire must also use a **Tax** question with the same configuration and mapping.

Restrictions

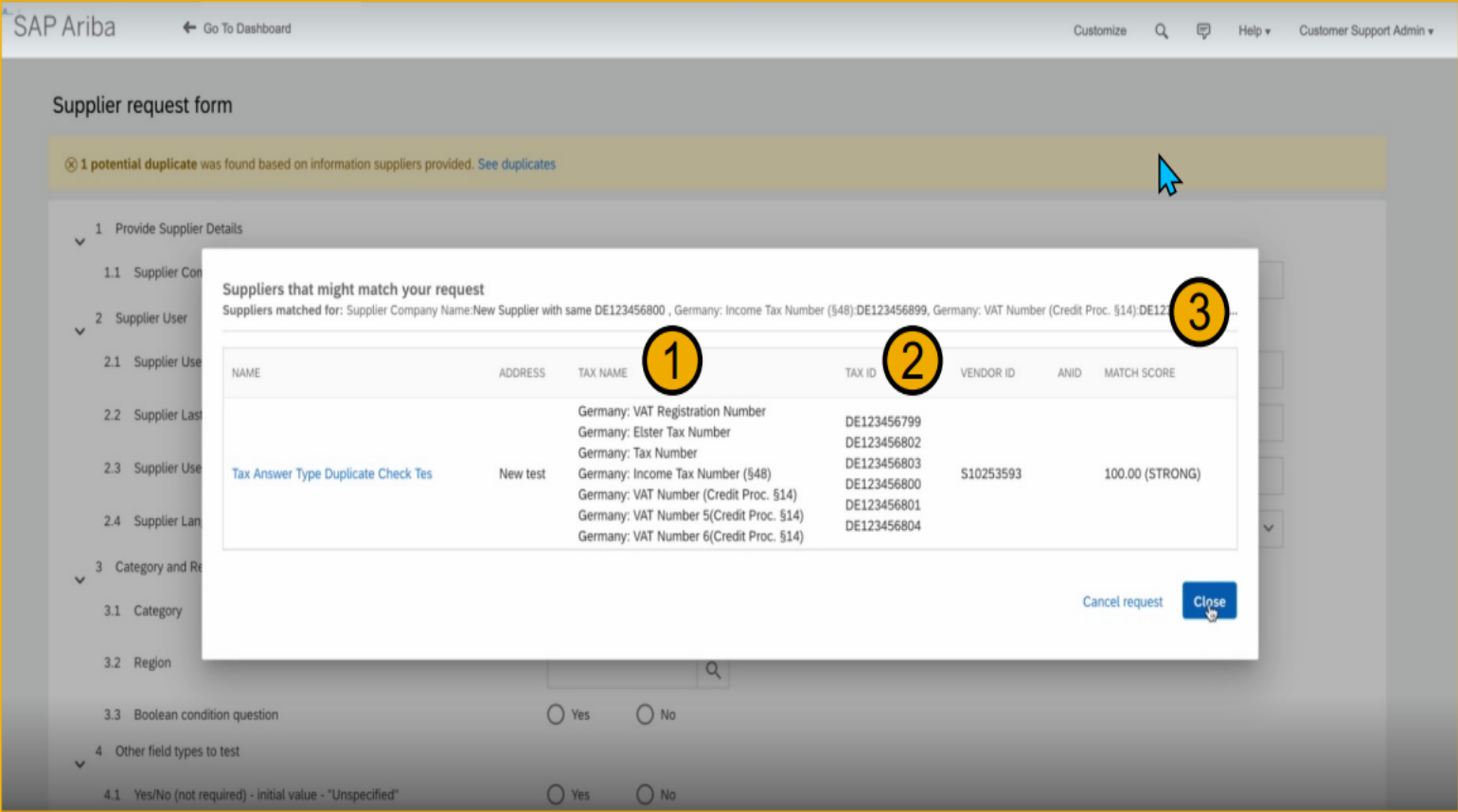
- Default duplicate check using **Tax** questions is only supported in the internal supplier request *without* Dun & Bradstreet integration.
- It is not supported in the external supplier request, which cannot include **Tax** questions, or in the D&B-integrated supplier request, which doesn't include tax data in the initial lookup.
- Duplicate check against tax IDs added through supplier data import, replication from an ERP system, or supplier registration questionnaires is only supported in default duplicate check using **Tax** questions in the internal supplier request.
 - It is not supported in custom duplicate check using individual, mapped tax questions, which only check against data in other supplier requests.
- Duplicate check against tax IDs in supplier registration questionnaires is only supported for answers added by questionnaire recipients.
 - It is not supported for answers added by registration questionnaire import.

Cautions

- Note that including both a **Tax** question and any individual questions mapped to tax fields in the same questionnaire is not supported. Choose either the recommended default duplicate check based on **Tax** answers or custom duplicate check based on individual tax questions, but do not attempt to combine both of them in the same supplier request template.

Feature details

- 1. Adds a new **Tax Name** column in the duplicate check popup in supplier request creation and approval. This includes the organization tax field names defined in your metadata for the countries/regions of taxes added in the supplier request.
- 2. Reuses the existing **Tax ID** column used for custom duplicate check based on individual tax questions.
- 3. The **Suppliers matched for** entry at the top of the popup now includes matching tax information.



Feature at a Glance Engagement Scores in Risk Exposure (ARI-16372) ([Link](#))

Engagement scores in risk exposure

Description

- The inherent risk and residual risk in control-based engagement risk assessment projects are now contributing factors to the risk exposure.

Customer benefit

- Provides a better view of the total risk associated with doing business with a supplier.
- An enhanced exposure score enables buyers to make better decisions in risk aware procurement processes (SAP Ariba guided buying capability, etc.)

User

- Buyer

Enablement model

- Automatically On

Applicable solutions:

- SAP Ariba Supplier Risk

Prerequisites, restrictions, cautions

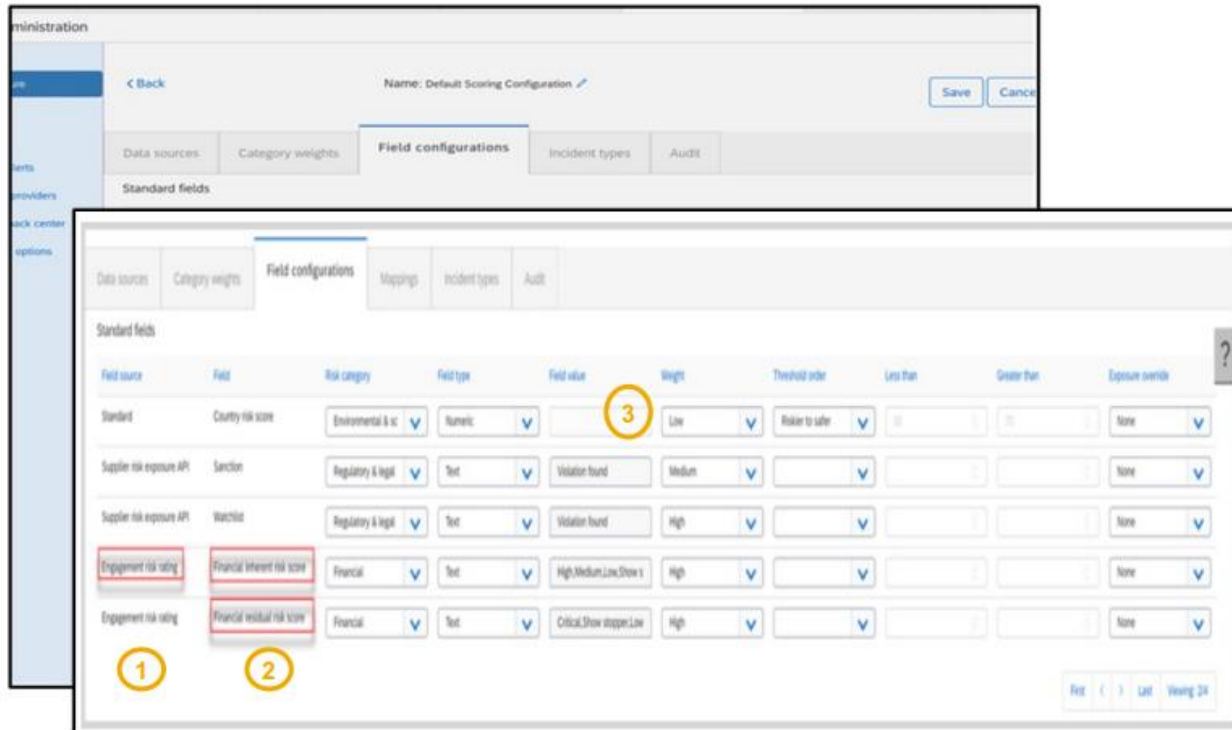
Prerequisites

- Your site must be configured for use of control-based engagement risk assessment projects.
- Your site must be configured for calculating supplier-level inherent and residual risk from risk domain values.
- You must be a member of the **Supplier Risk Manager** group to customize the risk exposure configuration.
- You need to create a new draft version in the configuration editor to display the new standard inherent risk and residual risk fields.

Restrictions

- You set up your inherent risk screening questionnaire to use either point-based or percentage-based scoring. This determines which parameter defines the inherent risk ratings you're using.
- See documentation for more information.

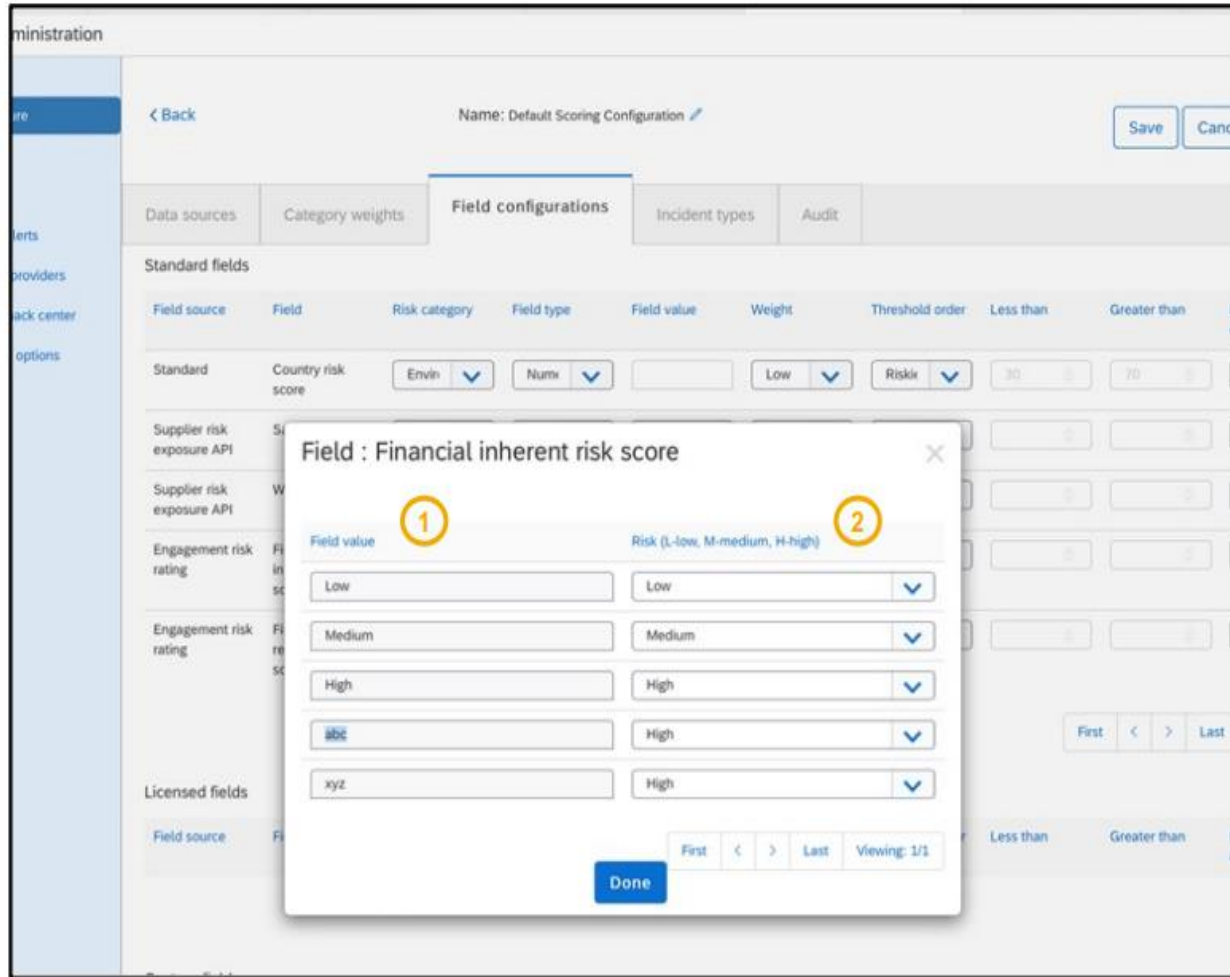
Feature details



- This feature introduces engagement risk scores as contributing factors to the risk exposure. The engagement scores in risk exposure use the supplier model for risk exposure calculation. For more information, see [Understanding how risk exposure is calculated](#).
- New standard engagement risk rating fields for each risk category have been introduced on the field settings tab of the risk configurator:
 - Environmental and social
 - inherent risk score
 - residual risk score
 - Financial
 - inherent risk score
 - residual risk score
 - Operational
 - inherent risk score
 - residual risk score
 - Regulatory and legal
 - inherent risk score
 - residual risk score
- The **Field value** has the following standard allowed values for the new fields and have a **weight** set as:

Field value	Weight
Low	Low
Medium	Medium
High	High
Critical	High
Showstopper	High

Feature details



1. For this feature, all ratings named in the point-based or percentage-based scoring parameter are displayed in the field value fields.
2. Field values are automatically updated based on the data that was created from master data as part of your engagement workflow. For example, you may have standard risk ratings such as: **Low, Medium, High, Critical,** or **Showstopper** or you may have custom field values like **abc** or **xyz**. The risk manager must assign the Risk (Low, Medium, High) for each field value.

You can use the default mapping or change the mapping for each of these five possible field values to a risk exposure weight of **Low, Medium, or High**, so that engagement-related inherent and residual risk ratings can contribute to the overall risk exposure.

Feature details

< Back Name: Save Cancel Activate

Data sources Category weights Field configurations **Mappings** Incident types Audit

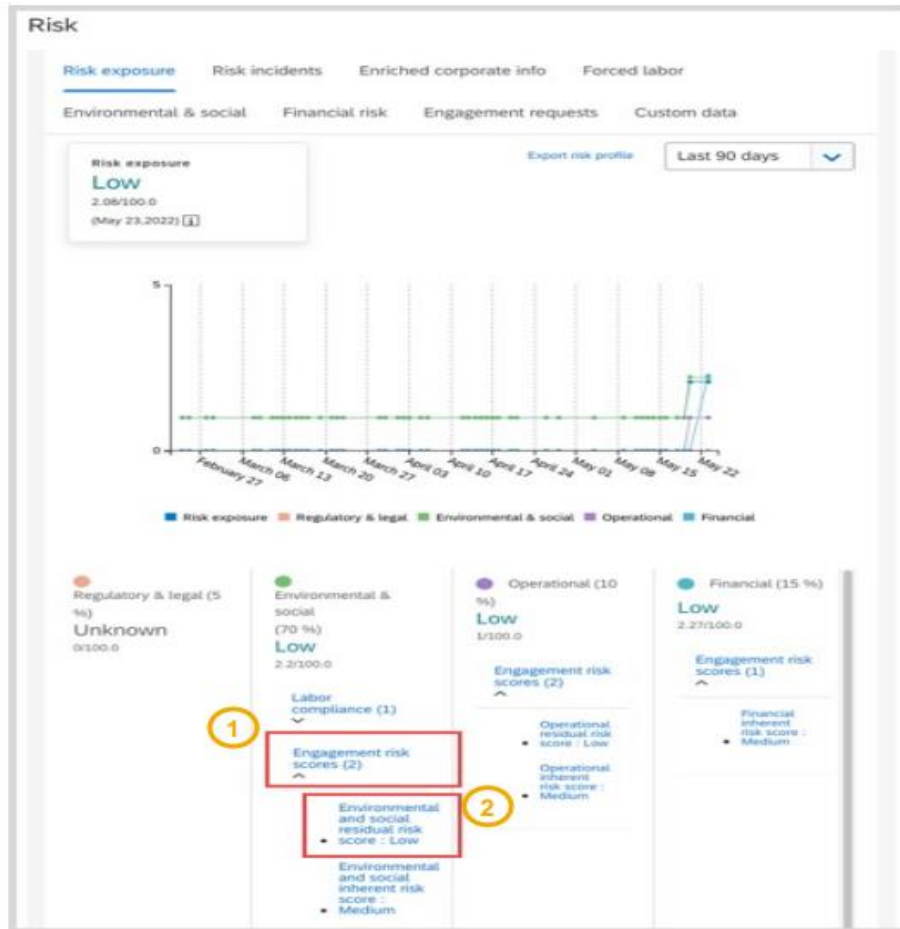
Engagement risk domain (7) Risk category

Enriched corporate information	Operational
Regulatory & legal	Regulatory & legal
Watchlists	Regulatory & legal
Operational	Operational
Financial	Financial
Environmental & social	Environmental & social
Sanctions	Regulatory & legal

First < > Last Viewing: 1/1

1. This feature introduces a new **Mappings** tab in the risk configuration.
2. The **Mappings** tab has columns for **Engagement risk domain** and **Risk category**.
3. Engagement risk domain can only be mapped to one risk category.

Feature details



This feature adds the following information to the **Risk exposure** tab:

1. The inherent risk score and the residual risk score for the supplier are listed in the **Engagement risk scores** dropdown for the risk categories on the **Risk exposure** tab of the **Risk** page in the supplier's 360° profile.
2. The inherent and residual risk scores in the **Engagement risk scores** dropdown are links that take you to the engagement project for that score.

Feature at a Glance Additional Custom Fields for Supplier Risk Data (ARI-16778)

[\(Link\)](#)

Additional custom fields for supplier risk data

Description

- Risk exposure configuration has been enhanced to allow 300 custom fields across all risk categories.
- The custom fields can contribute to the risk exposure, or they can be displayed as information only without contributing to the risk exposure.
- A new **Custom data** tab on the **Risk** page of the supplier's Risk profile shows the custom fields for each risk category.

Customer benefit

- Increased number of custom fields allows you to bring in a variety of data across risk categories for monitoring suppliers, thus enriching your capability to determine risk exposure.

User

- Buyer

Enablement model

- Automatically On

Applicable solutions:

- SAP Ariba Supplier Risk

Prerequisites, Restrictions, Cautions

Prerequisites

- You must be a member of the **Supplier Risk Manager** group to create custom fields and configure risk exposure.
- Best practice is to create a new draft version in the configuration editor, create your custom fields, and activate the draft version before executing your API updates.

Restrictions

- Custom fields cannot be used for adverse media or attachments.
- When configuring custom fields in the user interface or populating custom fields with values in the API or CSV upload, never include personally identifiable information (PII).

Cautions

- The custom fields and values can be added to the supplier 360° profile and the risk exposure using the Risk Category Information API for Supplier Risk Exposure or the existing CSV upload process. The CSV includes the suppliers and data elements that you defined in the configuration settings.
- The manual CSV upload process identifies each supplier by ERP Vendor ID and source system. When you use the Risk Category Information API, you must use the SM Vendor ID instead.
- All fields must be mapped in the configuration editor to be included in the risk exposure calculation for the supplier. Any eligible field with missing configuration is ignored and does not contribute to the risk exposure.

Feature details

This feature expands the existing custom field functionality in several ways:

- Number of available custom fields increases to 300.
- Field metadata now includes **URL**, **Notes**, and **Source** as optional additional information.
- Custom fields can now be information only and omitted from contributing to risk exposure.
- New **Custom data** tab shows the risk exposure for all contributing factors, including the new custom fields, by risk category.

The screenshot displays the 'Risk' interface with the 'Custom data' tab selected. The top navigation bar includes 'Risk exposure', 'Risk incidents', 'Enriched corporate info', 'Financial risk', 'Engagement requests', and 'Custom data'. Below this, a table lists risk categories and their exposure levels:

Risk category	Risk exposure
Regulatory & legal (5)	Low
Operational (5)	Low
Financial (5)	Low

Below the categories is a table of custom fields with columns for Name, Value, Update date, URL, Notes, Source, and Contributing:

Name	Value	Update date	URL	Notes	Source	Contributing
field 1	5	2022-08-06				✓
field 2	50					✓
field 3	25					✓
field 4	5					✓
field 5	15					✓

An inset window shows a detailed view of the 'Risk exposure' for 'LOW' (2,721,000.0) as of June 06, 2022. It features a line chart showing risk exposure from March 12 to June 06, with a legend for Risk exposure, Regulatory & legal, Environmental & social, Operational, and Financial. Below the chart are four panels for risk categories, each showing a 'Low' exposure level and a list of contributing custom fields:

- Regulatory & legal (25 %):** Low (4,091,000.0). Contributing fields: field 15: 5, field 14: 5, field 13: 5, field 12: 5.
- Environmental & social (25 %):** Low (2,021,000.0). Contributing field: Labor compliance (1).
- Operational (25 %):** Low (3,781,000.0). Contributing fields: field 10: good, field 9: average, field 8: good, field 7: average.
- Financial (25 %):** Low (1,830.0). Contributing fields: field 5: 15, field 4: 5, field 3: 25, field 2: 50.

Time for a quick **Survey/Feedback.**



Thank you.

Contact information:

Prashant Shettar p.shettar@sap.com

Sachin Mukund sachin.mukund@sap.com

Kamakshi Sanjeevgowda kamakshi.sanjeevgowda@sap.com

2211 (Q4-2022) **Appendix**



Feature Releases

Features	Description	Feature is available in						Enabling this feature
		SAP Ariba Sourcing	SAP Ariba Contracts	SAP Ariba SIPM	SAP Ariba SLP	SAP Ariba Supplier Risk	SAP Ariba Strategic Sourcing Suite	
Strategic Sourcing for Industries								
Ability to cancel RFQs in the SAP S/4HANA Central sourcing with SAP Ariba Sourcing and S/4HANA Sourcing with SAP Ariba Sourcing integration scenarios [DMS-10347]	As part of the SAP S/4HANA Central sourcing with SAP Ariba Sourcing (4QN) and S/4HANA Sourcing with SAP Ariba Sourcing (4BL) integration scenarios, this feature gives buyers the ability to cancel RFQs and Central RFQs in SAP S/4HANA or SAP S/4HANA Cloud. The cancellation leads to the deletion of the associated Sourcing Request in SAP Ariba Sourcing.	✓					✓	Automatically On
Ability to add product sourcing items to full projects in guided sourcing [DMS-16675]	This feature gives buyers the ability to create full sourcing projects in guided sourcing directly from the Product Sourcing dashboard. Buyers can choose the BOMs and materials for which they want to collect pricing and then add them to the event document within the full sourcing project in guided sourcing.	✓					✓	Customer Configured
Enhancements to the guided sourcing event award process [DMS-16813]	This feature introduces multiple enhancements to the guided sourcing event award process, including the ability to send draft award scenarios to external ERP systems, create follow-on documents from an awarded scenario if no follow-on documents were previously created, and create or resend follow-on documents from an awarded scenario multiple times.	✓					✓	Automatically On

Feature Releases

Features	Description	Feature is available in						Enabling this feature
		SAP Ariba Sourcing	SAP Ariba Contracts	SAP Ariba SIPM	SAP Ariba SLP	SAP Ariba Supplier Risk	SAP Ariba Strategic Sourcing Suite	
Strategic Sourcing for Industries								
SAP Task Center integration with SAP Ariba Sourcing [DMS-17979]	You can enable SAP Task Center for SAP Ariba Sourcing in the SAP S/4HANA Cloud 4BL and 4QN integration scenarios.	✓					✓	Support Request
Support for using European Single Procurement Document (ESPD) in public sector events [ET-7]	This feature enables buyers in EU public sector to add the European Single Procurement Document (ESPD) to sourcing events for collecting responses to ESPD from suppliers participating in public sector events. Suppliers can export the responses as an XML file and choose to import the file to ESPD services. Similarly, suppliers can also import the XML file of a previous response into the event.	✓					✓	Automatically On
Support for publishing public procurement notices on the Tender Electronic Daily (TED) portal [ET-9]	This feature enables buyer administrators to associate the public procurement notices with a public sector event template. Buyers can enter procurement details in the notices attached to the event and publish the notices on the Tender Electronic Daily (TED) portal. Suppliers can view the notices on the portal and the related event details on an unrestricted access page. Interested suppliers can invite themselves to participate in the event after registering on Ariba Discovery.	✓					✓	Support Request

SAP Ariba and SAP Fieldglass

Follow us



www.sap.com/contactsap

© 2022 SAP SE or an SAP affiliate company. All rights reserved.

No part of this publication may be reproduced or transmitted in any form or for any purpose without the express permission of SAP SE or an SAP affiliate company.

The information contained herein may be changed without prior notice. Some software products marketed by SAP SE and its distributors contain proprietary software components of other software vendors. National product specifications may vary.

These materials are provided by SAP SE or an SAP affiliate company for informational purposes only, without representation or warranty of any kind, and SAP or its affiliated companies shall not be liable for errors or omissions with respect to the materials. The only warranties for SAP or SAP affiliate company products and services are those that are set forth in the express warranty statements accompanying such products and services, if any. Nothing herein should be construed as constituting an additional warranty.

In particular, SAP SE or its affiliated companies have no obligation to pursue any course of business outlined in this document or any related presentation, or to develop or release any functionality mentioned therein. This document, or any related presentation, and SAP SE's or its affiliated companies' strategy and possible future developments, products, and/or platforms, directions, and functionality are all subject to change and may be changed by SAP SE or its affiliated companies at any time for any reason without notice. The information in this document is not a commitment, promise, or legal obligation to deliver any material, code, or functionality. All forward-looking statements are subject to various risks and uncertainties that could cause actual results to differ materially from expectations. Readers are cautioned not to place undue reliance on these forward-looking statements, and they should not be relied upon in making purchasing decisions.

SAP and other SAP products and services mentioned herein as well as their respective logos are trademarks or registered trademarks of SAP SE (or an SAP affiliate company) in Germany and other countries. All other product and service names mentioned are the trademarks of their respective companies.

See www.sap.com/copyright for additional trademark information and notices.