



SAP Ariba 

## SAP Ariba Quarterly Release Updates, 2205 (Q2- 2022)

### SAP Ariba Strategic Sourcing and Supplier Management Solutions.

June 08, 2022

Public

# Agenda

- Background & Objectives
- Meet one of SAP's Customer Success Partners (CSP)
- 2205 (Q2-2022) Feature Releases
- Features at a Glance & Demo's
- Appendix

# Background & Objectives



# Background & Objectives

- SAP Ariba releases a number of innovations on Quarterly basis across the Ariba Solution Portfolio
- In most cases, Ariba Customers are not able to keep track of these releases or understand which of these new innovations might be useful for addressing their current pain points
- The objective of this session is to provide a brief synopsis of the Ariba innovations on a quarterly basis to help Ariba Customers keep up to date with the new features & functionalities released by SAP Ariba
- In this session we will provide a summary of these features at a high level and deep dive into few key features only (along with Demo). If there is any specific feature that you are interested in deep diving, please reach out to your respective CEE/CSP's for the same

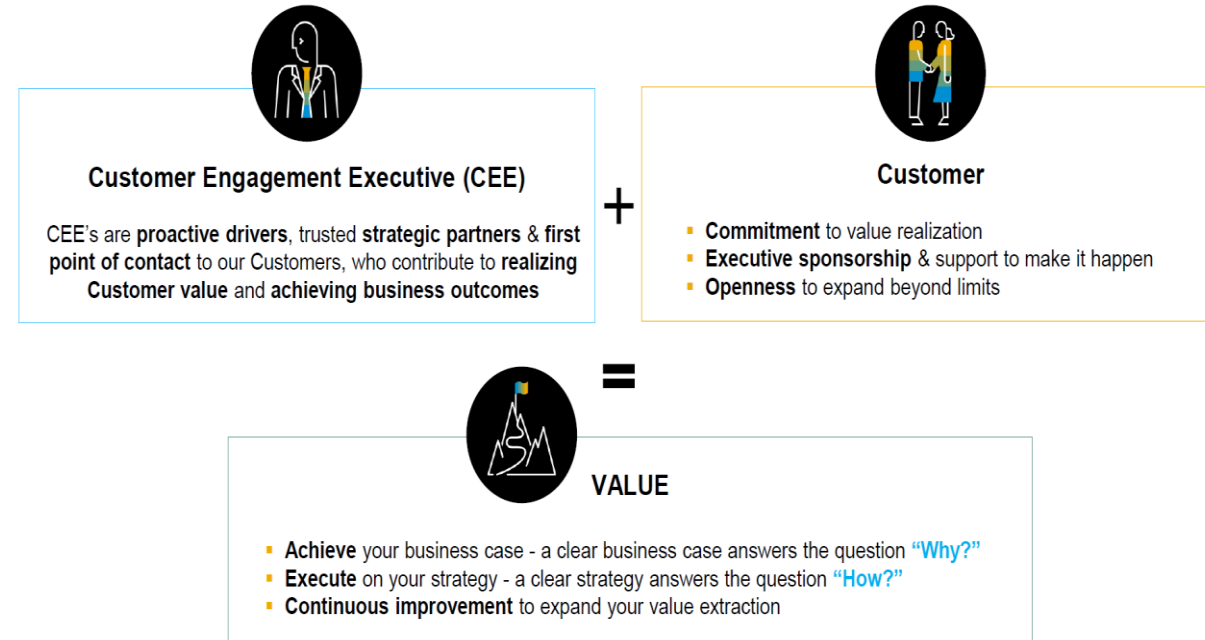
**Meet one of SAP's **Customer Success Partners (CSP)****



# Valentina Kitanovic



- Been with SAP since September 2016, working in Australia based out of Brisbane.
- SAP Skillset – Procurement Solutions
- Industry Focus: Banking, Energy and Government
- Born and raised in Australia with European heritage
- Love the outdoors, especially the beach. Weekends are spent exploring south east Queensland
- I have over 20 years procurement experience having working as an ICT Contract and Procurement manager in Federal Government before joining SAP
- Favourite SAP topics:
  - Managing External Workforce; and
  - Delivering the best customer experience through our CX framework



# Meet one of SAP's Customer Success Partners (CSP)

## Gaurav Shinde



- Since July 2017 with SAP Ariba
- Industry Focus: Manufacturing & Professional Services
- Based out of Mumbai , India
- A firm believer of Customer First , passionate about helping customers achieve and sustain adoption of their SAP procurement solutions
- Previously worked for Infor
- Favourite SAP topics:
  - 12 Keys of Success (Project Must-Knows)
  - Value Scorecard
  - Customer Advocacy



# 2205 (Q2-2022) **Feature Releases**





# Feature Releases

Features	Description	Feature is available in						Enabling this feature
		SAP Ariba Sourcing	SAP Ariba Contracts	SAP Ariba SIPM	SAP Ariba SLP	SAP Ariba Supplier Risk	SAP Ariba Strategic Sourcing Suite	
<b>Mobile</b>								
Performing supplier management tasks using the SAP Ariba Procurement mobile app [BMA-2649]	This feature enables SAP Ariba Strategic Sourcing solutions users to use the mobile device to perform certain supplier management tasks such as, searching for suppliers, viewing their profiles, requesting new suppliers, and viewing supplier registrations.							Automatically On

# Feature Releases

Features	Description	Feature is available in						Enabling this feature
		SAP Ariba Sourcing	SAP Ariba Contracts	SAP Ariba SIPM	SAP Ariba SLP	SAP Ariba Supplier Risk	SAP Ariba Strategic Sourcing Suite	
<b>Sourcing</b>								
<b>Enhancements to master data integration with SAP S/4HANA Cloud using SAP Master Data Integration [PLMDS-4243]</b>	This feature introduces enhancements to master data integration between SAP Ariba applications and SAP S/4HANA Cloud using the SAP Master Data Integration service and SAP Ariba master data native integration (MDNI). Now, master data integration can be configured for replicating supported master data objects without the help of SAP Ariba Support. For replicating master data objects from SAP Material Master, or objects with Business System ID, a new parameter is available to allow the master data objects to be directly published to the master data service (MDS).	✓					✓	Customer Configured
<b>Multi-stage projects in guided sourcing [SS-12729]</b>	This feature enables you to link one or more guided sourcing projects and copy project data to your guided sourcing follow-on projects. This feature supports Single event and Full project type projects.	✓					✓	Automatically On
<b>Support for automatic addition of preferred suppliers in guided sourcing [SS-19827]</b>	This feature enables buyers using SAP Ariba Sourcing integrated with SAP Ariba Supplier Lifecycle and Performance (SLP) to create guided sourcing events where preferred suppliers are automatically added to the event based on the commodity and region values selected for the event or a line item. Buyers can review and modify the list of automatically-added suppliers. This feature is available only when the template used for creating a guided sourcing event is configured to support automatic addition of preferred suppliers either at the item or event level.	✓					✓	Automatically On

# Feature Releases

Features	Description	Feature is available in						Enabling this feature
		SAP Ariba Sourcing	SAP Ariba Contracts	SAP Ariba SIPM	SAP Ariba SLP	SAP Ariba Supplier Risk	SAP Ariba Strategic Sourcing Suite	
<b>Sourcing</b>								
<b>Content documents in guided sourcing full projects [SS-19940]</b>	This feature adds support for content documents in guided sourcing full projects. Buyers can create a content document in a guided sourcing full project. Later when creating a guided sourcing event, buyers can directly copy the content document in whole or in part to the event, without having to add each item individually.	✓					✓	Automatically On
<b>Support for award scenario export and import using Excel spreadsheets [SS-27807]</b>	This feature allows users to export and import manual award scenarios using Excel spreadsheets.	✓					✓	Automatically On
<b>Message board for full projects in guided sourcing [SS-28996]</b>	This feature adds a message board panel to guided sourcing full projects, which allows you to communicate with internal project team members and external supplier contacts more efficiently.	✓					✓	Automatically On

# Feature Releases

Features	Description	Feature is available in						Enabling this feature
		SAP Ariba Sourcing	SAP Ariba Contracts	SAP Ariba SIPM	SAP Ariba SLP	SAP Ariba Supplier Risk	SAP Ariba Strategic Sourcing Suite	
<b>Sourcing</b>								
<b>Ability to update guided sourcing event contents via smart import from Excel [SS-29572]</b>	This feature allows buyers using the guided sourcing capability of SAP Ariba Sourcing to update an event content via the smart import from Excel feature. Buyers can use the smart import from Excel feature to import event contents from an Excel document in an unstructured format and have SAP Ariba to use machine intelligence to map their entries to line items and questions. As part of this feature, buyers can add or edit event contents such as line items and questions via the smart import from Excel feature, when the event is in the draft or open state.	✓					✓	Automatically On
<b>Open classic full sourcing projects in the classic interface for guided sourcing users [SS-30639]</b>	This feature enables guided sourcing users to view full projects created in the SAP Ariba Sourcing classic user interface ("classic full projects"). Classic full projects now open by default in the classic user interface and appears in the live feed, For You dashboard, and in the guided sourcing projects search results page. As part of the feature, users can click a classic full project name to view and edit in the SAP Ariba Sourcing classic user interface.	✓					✓	Automatically On
<b>For You link to the Templates area [SS-30640]</b>	This feature allows guided sourcing users to easily access and manage event-related templates from the For You dashboard.	✓					✓	Automatically On

# Feature Releases

Features	Description	Feature is available in						Enabling this feature
		SAP Ariba Sourcing	SAP Ariba Contracts	SAP Ariba SIPM	SAP Ariba SLP	SAP Ariba Supplier Risk	SAP Ariba Strategic Sourcing Suite	
<b>Sourcing</b>								
<b>Ability to view and access the project template from a guided sourcing project [SS-30651]</b>	This feature enables buyers who are working on a guided sourcing project to identify the template used for creating the sourcing project. With necessary permissions, buyers can also access the template where they can review existing settings and configurations as applicable of the sourcing project, edit the template details, and so on. In full sourcing projects, buyers can access the workspace of the selected template, but in single-event projects (including events created in full projects), buyers can access the corresponding document in the selected template's workspace.	✓					✓	Automatically On
<b>Sourcing Support Desk and Event Day Management in guided sourcing [SS-30652]</b>	This feature makes the Sourcing Support Desk (SSD) and Event Day Management (EDM) services available in guided sourcing. The SSD service allows you to request SAP Ariba resources to review your guided sourcing events in draft format and get general recommendations for best practices in event setup. The EDM service enables SAP Ariba support to manage your sourcing events as an SAP Ariba customer support administrator, helping you run the sourcing events smoothly. This feature also enables you to delete auction bids in the event that participants submit an erroneous or unreasonable bid.	✓					✓	Automatically On
<b>Support for customizing email notifications in guided sourcing [SS-30664]</b>	This feature enables buyers to customize the standard email notifications sent to team members and suppliers. Buyers working on a guided sourcing project can find a list of standard email templates derived from the project template, from which they can choose the templates to modify as necessary. Custom email templates, if present in the project template, are also shown in the list.	✓					✓	Automatically On

# Feature Releases

Features	Description	Feature is available in						Enabling this feature
		SAP Ariba Sourcing	SAP Ariba Contracts	SAP Ariba SIPM	SAP Ariba SLP	SAP Ariba Supplier Risk	SAP Ariba Strategic Sourcing Suite	
<b>Sourcing</b>								
<b>Ability to import event content from an unstructured Excel file for RFI and Auction events in SAP Ariba Sourcing [SS-31561]</b>	This feature extends the capability of importing event content from an unstructured Excel file to RFI and Auction events in SAP Ariba Sourcing. Buyers can upload an Excel file containing event content such as line-items, questions, and requirements to add to a new event or modify an existing event as necessary.	✓					✓	Automatically On
<b>Support for mass translation of event content in guided sourcing [SS-32083]</b>	This feature enables buyers to manage translations for all the fields supporting translations in a guided sourcing project through a single operation. Buyers can add or modify translations to multiple fields simultaneously in multiple languages.	✓					✓	Automatically On
<b>Bid Comparison Report enhancements in guided sourcing [SSR-1895]</b>	This feature introduces enhancements and new configuration settings to configurable bid comparison reports for guided sourcing events.	✓					✓	Automatically On

# Feature Releases

Features	Description	Feature is available in						Enabling this feature
		SAP Ariba Sourcing	SAP Ariba Contracts	SAP Ariba SIPM	SAP Ariba SLP	SAP Ariba Supplier Risk	SAP Ariba Strategic Sourcing Suite	
<b>Contracts</b>								
<b>Enhancements to master data integration with SAP S/4HANA Cloud using SAP Master Data Integration [PLMDS-4243]</b>	This feature introduces enhancements to master data integration between SAP Ariba applications and SAP S/4HANA Cloud using the SAP Master Data Integration service and SAP Ariba master data native integration (MDNI). Now, master data integration can be configured for replicating supported master data objects without the help of SAP Ariba Support. For replicating master data objects from SAP Material Master, or objects with Business System ID, a new parameter is available to allow the master data objects to be directly published to the master data service (MDS).		✓				✓	Customer Configured

# Feature Releases

Features	Description	Feature is available in						Enabling this feature
		SAP Ariba Sourcing	SAP Ariba Contracts	SAP Ariba SIPM	SAP Ariba SLP	SAP Ariba Supplier Risk	SAP Ariba Strategic Sourcing Suite	
<b>Supplier Management</b>								
<b>Supplier discontinuation process [SM-12984]</b>	This feature introduces a new supplier lifecycle Disqualification, which is a separate process with its own workflow and process statuses. Discontinuing existing qualification processes is to disqualify these processes.				✓		✓	Customer Configured
<b>Ability to add or update process expiration dates using data import [SM-14239]</b>	This feature enables buyers to add or update the expiration date for supplier management processes by extending the existing data import function.				✓		✓	Automatically On
<b>Enhancements to the Summary area in the supplier 360° profile: consolidated supplier information [SM-17596]</b>	This feature provides additional information about the supplier, their contacts, risk profile, diversity, and the supplier IDs by introducing new panels in the Summary area in supplier 360° profile.				✓		✓	Automatically On



# Feature Releases

Features	Description	Feature is available in						Enabling this feature
		SAP Ariba Sourcing	SAP Ariba Contracts	SAP Ariba SIPM	SAP Ariba SLP	SAP Ariba Supplier Risk	SAP Ariba Strategic Sourcing Suite	
<b>Supplier Management</b>								
<b>Supplier Certificate Data report [SM-19458]</b>	This feature adds the Supplier Certificate Data report type to the Supplier data snapshots page. The report collects the supplier's certificate data across different questionnaires.				✓		✓	Automatically On
<b>Verification of supplier data integration with SAP S/4HANA [SM-24396]</b>	This feature verifies supplier data integration with SAP S/4HANA using supplier management configuration best practices for integration, including supplier request and registration project best practices.				✓		✓	Automatically On
<b>Verification of supplier data integration with SAP ECC [SM-24397]</b>	This feature verifies supplier data integration with SAP ERP (SAP ECC) using supplier management configuration best practices for integration, including supplier request and registration project best practices.				✓		✓	Automatically On

# Feature Releases

Features	Description	Feature is available in						Enabling this feature
		SAP Ariba Sourcing	SAP Ariba Contracts	SAP Ariba SIPM	SAP Ariba SLP	SAP Ariba Supplier Risk	SAP Ariba Strategic Sourcing Suite	
<b>Supplier Management</b>								
<b>Automatic synchronization of supplier ACM IDs to the integrated ERP system [SM-27668]</b>	This feature automatically synchronizes supplier ACM IDs set as default values in generic custom fields to the integrated SAP ERP or SAP S/4HANA system as part of integration messages. Previously, with suppliers created from data imports or replication from the ERP system, integration messages for updates in SAP Ariba didn't include the ACM ID, and it was necessary to manually add it to the supplier record in the ERP system.				✓		✓	Customer Configured
<b>Support for bidirectional integration of long party tax IDs in supplier tax information [SM-30040]</b>	This feature allows the integration of the tax identification type code 5 or greater than 5 with SAP ERP, SAP S/4HANA, or SAP Master Data Governance (MDG) . Now, the tax identification type code 5 or greater than 5 is included in LONG_PartyTaxID element rather than PartyTaxID element of integration messages and suppliers can view the values in the supplier management questionnaire.				✓		✓	Customer Configured
<b>Support for field mapping validation when default field values and template content are imported [SM-30115]</b>	This feature enables validation checks when users import default field values and questionnaire template content.				✓		✓	Automatically On

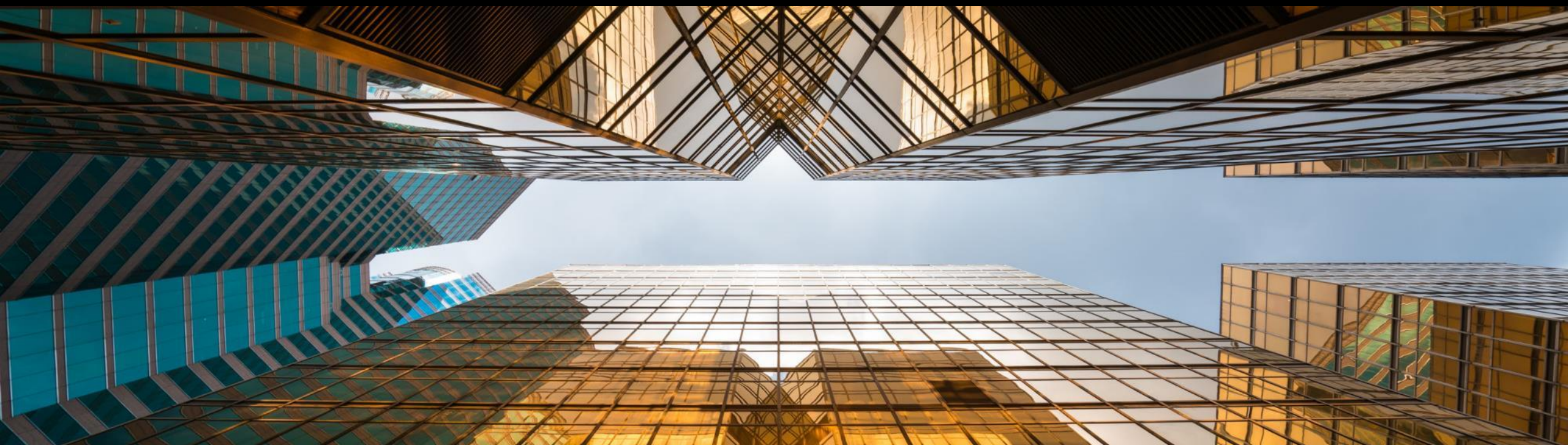
# Feature Releases

Features	Description	Feature is available in						Enabling this feature
		SAP Ariba Sourcing	SAP Ariba Contracts	SAP Ariba SIPM	SAP Ariba SLP	SAP Ariba Supplier Risk	SAP Ariba Strategic Sourcing Suite	
<b>Supplier Management</b>								
<b>View saved versions of process intake forms and export them to Microsoft Excel [SM-31572]</b>	This feature allows users to view multiple versions of process intake forms within the system. It also allows users to export these versions to Microsoft Excel. Versions of intake forms are saved automatically when users update them.				✓		✓	Automatically On
<b>Ability to update external modular questionnaires with any status using the Supplier Data API with Pagination [SM-32998]</b>	This feature introduces the ability to use the Supplier Data API with Pagination /answers endpoint to update external modular questionnaires with any status, including prepopulating newly created questionnaires with answers from other systems. Previously, you couldn't use the API to update external modular questionnaires that were currently editable by the supplier.				✓		✓	Customer Configured
<b>Enhancements to the Supplier Data API with Pagination for process framework [SM-33627]</b>	This feature enables buyers to use the Supplier Data API with Pagination to update intake forms for process projects and the expiration and due dates of modular questionnaires included in process projects, retrieve process details, process decision history, process intake form details, and questionnaire details, and trigger approval tasks for questionnaire updates made using the API.				✓		✓	Customer Configured

# Feature Releases

Features	Description	Feature is available in						Enabling this feature
		SAP Ariba Sourcing	SAP Ariba Contracts	SAP Ariba SIPM	SAP Ariba SLP	SAP Ariba Supplier Risk	SAP Ariba Strategic Sourcing Suite	
<b>Supplier Risk</b>								
<b>Manage user interactions with engagements during activity processing [ARI-12491]</b>	This feature clarifies for users the current state of an engagement while the system is processing updates related to task management or submission of a new or edited request. The system provides visual cues while updates are in progress and when they are complete.					✓		Customer Configured
<b>Engagement list page enhancements [ARI-15401]</b>	The New requests, In progress, and Completed tabs on the Engagement requests page are enhanced with new filter and sort options to improve the user experience when viewing and managing large numbers of control-based engagement risk assessment projects.					✓		Customer Configured
<b>Calculate inherent risk for engagement requests by risk domain [ARI-16207]</b>	This feature enables calculating an inherent risk rating for each risk domain represented in an engagement request. Internal risk experts can assign weights to risk domains, so that the engagement-level inherent risk calculation reflects the relative importance of each.					✓		Customer Configured

# Features at a **Glance**



# Support for automatic addition of preferred suppliers in guided sourcing [SS-19827]

**DEMO**

# Support for award scenario export and import using Excel spreadsheets [SS-27807]

**DEMO**

# **Performing supplier management tasks using the SAP Ariba Procurement mobile app [BMA-2649]**



# Feature at a Glance

Ease of implementation ● Hi touch  
Geographic relevance ● Global

## Introducing: Performing Supplier Management Tasks Using the SAP Ariba Procurement Mobile App

### Customer challenge

Supplier onboarding can be a bottleneck for downstream processes. Currently, there is no method to manage the supplier onboarding process or track it's progress on mobile. This leads to decreased efficiency and bottlenecks.

### Meet that challenge with SAP Ariba

This feature enables SAP Ariba Strategic Sourcing solutions users to use the mobile device to perform certain supplier management tasks such as, searching for suppliers, viewing their profiles, requesting new suppliers, and viewing supplier registrations.

### Experience key benefits

- Creating supplier requests while mobile enhances process efficiency
- Supplier information can now always be on hand when it's needed
- The status of a supplier's onboarding journey can be monitored even while remote

### Solution area

SAP Ariba Procurement Mobile App  
SAP Ariba Supplier Lifecycle and Performance  
SAP Ariba Supplier Information and Performance Management

### Implementation information

This feature is **automatically on** for all customers with the applicable solutions and is ready for immediate use.

### Prerequisites and Restrictions

Please see Prerequisites and Restrictions slide.

## Feature at a Glance

Introducing: **Performing Supplier Management Tasks Using the SAP Ariba Procurement Mobile App**

### Prerequisites and Restrictions

#### Prerequisites

- You must belong to the Ariba Mobile User group in order to use the SAP Ariba Procurement mobile app.
- You must belong to the Mobile Supplier Manager and Supplier Request Manager or SM Ops Administrator groups to create supplier requests.
- Ensure that you enable the Enable Supplier Management link access to all users (Application.Mobile.Tiles.SupplierOnboardingEnabledForAll) parameter if you want all users irrespective of their group memberships to access this feature.

#### Restrictions

- Push notification related to supplier requests are not supported.
- The following supplier request form fields are not displayed in the SAP Ariba Procurement mobile app:
  - Bank
  - Extended Address
  - Certificate
  - Tax
  - BusinessPartner
- Registration invitations to suppliers cannot be issued manually using the SAP Ariba Procurement mobile app.
- Supplier qualification activities such as starting qualification projects and sending qualification questionnaires are not supported in the mobile app.
- Repeatable sections in supplier request forms are not supported.
- This feature is not supported in sites that are configured for the approved supplier requests to be validated in SAP Master Data Governance for suppliers (MDG-S) module before the new supplier database records are created in the SAP Ariba Strategic Sourcing solutions.

## Feature at a Glance

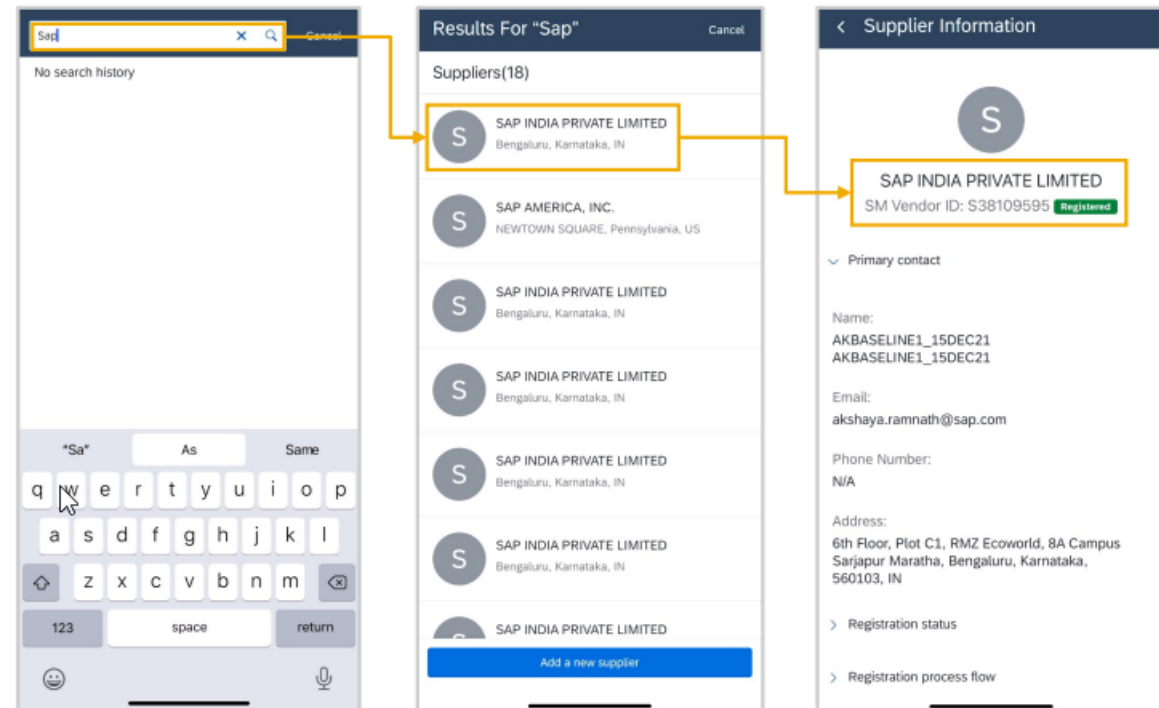
Introducing: **Performing Supplier Management Tasks Using the SAP Ariba Procurement Mobile App**

### Search and View Suppliers

**Search for suppliers:** Users can search for suppliers by name, contact details, or location from the **Supplier Management** page, and view detailed information about them.

**View supplier 360° profile:** Users can tap a supplier's name to see their 360° profile. The supplier 360° profile shows all of the information your organization has about a supplier.

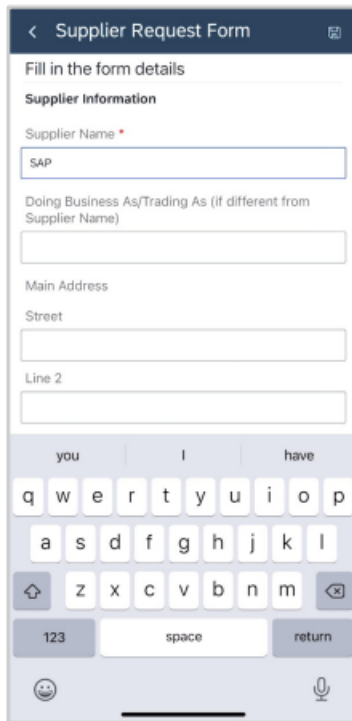
**Note:** Only the **Summary** and the **Registration** sections are displayed in the mobile app.



## Feature at a Glance

Introducing: **Performing Supplier Management Tasks Using the SAP Ariba Procurement Mobile App**

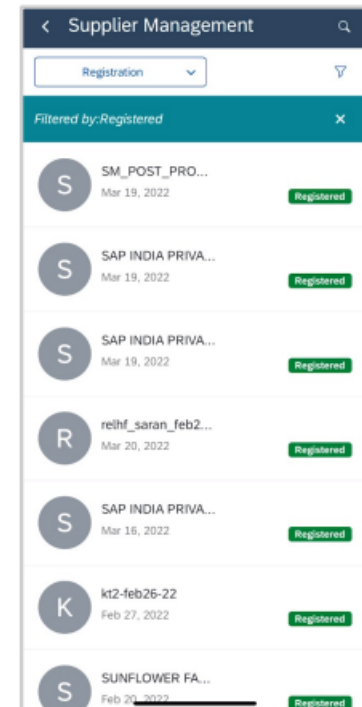
### Request New Suppliers and Supplier Registrations



**Request new suppliers:** Users who want to request to work with new suppliers, create and submit internal supplier request forms. When a supplier request is approved, the supplier is created in your site.

I

**View supplier registrations:** Users can view a list of the available supplier registrations in various statuses.





Icon	Supplier Name	Date	Status
S	SM_POST_PRO...	Mar 19, 2022	Registered
S	SAP INDIA PRIVA...	Mar 19, 2022	Registered
S	SAP INDIA PRIVA...	Mar 19, 2022	Registered
R	reihf_saran_feb2...	Mar 20, 2022	Registered
S	SAP INDIA PRIVA...	Mar 16, 2022	Registered
K	kt2-feb26-22	Feb 27, 2022	Registered
S	SUNFLOWER FA...	Feb 20, 2022	Registered

DEMO

# Supplier discontinuation process [SM-12984]

## Feature at a Glance

### Introducing: **Supplier discontinuation process**

Ease of implementation  Some complexity  
Geographic relevance  Global

#### Customer challenge

Previously, buyers can create, renew, and cancel qualification processes using the Modular Process Framework. A decision-maker can change the status of a qualification process manually, and the buyer administrator can also update the status by using data import tasks or an API client application. However, there's no separate disqualification process workflow with questionnaires and approvals.

#### Meet that challenge with **SAP Ariba**

This feature introduces the new process type **Disqualification** to the [Modular Process Framework](#). It enables buyer administrators to create a separate process workflow to fully or partially discontinue existing qualification processes and perform other discontinuation-related operations in the supplier 360° profile or through the associated data import task. The cancellation, renewal, and decision-making workflows are the same as those for qualification processes.

#### Experience key benefits

- Parity with existing legacy Disqualification Process
- Completes the end-to-end qualification cycle
- Full or partial disqualification is now supported

#### Solution area

SAP Ariba Supplier Lifecycle and Performance  
SAP Ariba Strategic Sourcing Suite

#### Implementation information

This feature is automatically on for all customers with the applicable solutions but requires **customer configuration**.

#### Prerequisites and Restrictions

Please refer to the detailed slides for prerequisites & restrictions.

## Feature at a Glance

### Introducing: **Supplier discontinuation process**

#### **Detailed feature information**

This feature introduces a new supplier lifecycle **Disqualification**, which is a separate process with its own workflow and process statuses. Discontinuing existing qualification processes is to disqualify these processes.

Discontinuation processes are designed to be internal processes that only involve users in the buying organization. Therefore, it is not recommended that buyers choose external modular questionnaires during the discontinuation process. Otherwise, the suppliers are aware of the discontinuation for their products when they answer external modular questionnaires.

With this feature, buyers with appropriate permissions can perform the following actions in the supplier 360° profile:

- Partially or fully discontinue supplier management processes with approved or conditionally approved decision statuses
- Cancel ongoing discontinuation processes or ongoing discontinuation renewal
- Renew discontinued supplier management processes
- Make decisions for discontinuation processes

In addition, buyer administrators can also create discontinuation processes and change statuses of existing discontinuation processes by running data import tasks.



## Feature at a Glance

### Introducing: **Supplier discontinuation process**

#### Prerequisites

- The supplier management process project feature ([SM-16798](#)) must be enabled.
- To discontinue a supplier management process using a project, the buyer administrator must set up the discontinuation process by:
  - Defining the Disqualification process type and associated statuses. Disqualification is a separate process with its own workflow and process statuses.
    - **Note** the buyer administrator currently can configure only one discontinuation process type, which automatically associates with all supplier management process types.
  - Creating and publishing a discontinuation process project template
    - When users create a template, they must choose the defined discontinuation process type for **SM Process Project**.
    - The template *cannot* contain **Process Initiator** and **Decision Maker** groups
    - To keep the discontinuation a strictly internal process, the buyer administrator needs to make sure that *only internal modular questionnaires are referenced* in the external tasks of the discontinuation project template
  - Except for these points, the remaining template setup steps are the same as those for setting up any process project. For details, refer to [Workflow for setting up process projects](#).
- To start a discontinuation, you must be a member of the **Process Initiator** group for the *existing* supplier management process to be discontinued.
- To make a discontinuation decision for a supplier management process, you must be a member of the **Decision Maker** group for the supplier management process being discontinued.

## Feature at a Glance

### Introducing: **Supplier discontinuation process**

#### **Restrictions**

- Discontinuation processes are designed to be **internal processes** that only involve users in the buying organization. Therefore, it is not recommended that buyers choose external MQ during the discontinuation process. Otherwise, the suppliers are aware of the discontinuation for their products when they answer external MQs. To keep the discontinuation a strictly internal process, the buyer administrator needs to make sure that only internal MQs are referenced in the external tasks of the discontinuation project template.
- Currently, a site can only have **one discontinuation process type** and **one associated discontinuation process project template**. The buyer administrator defines discontinuation for all qualification process types in the site.
- Currently, discontinuation is **not supported for miscellaneous processes**. Only qualification processes can be discontinued.

I

## Feature at a Glance

### Introducing: **Supplier discontinuation process**

#### **Disqualification Process**

You can fully or partially discontinue an existing qualification process depending on the **Matrix** (commodity, region, and department combination) selection when starting a discontinuation.

- To fully discontinue (Parent Disqualification), simply accept the pre-filled matrix combination.
- To partially discontinue (Child Disqualification), you can select a subset combination of prefilled Matrix (specific commodity/region/department underneath the pre-filled value).

For discontinuation process creation:

- You can only create one parent discontinuation process with the same matrix combination.
- After starting a partial discontinuation, the parent qualification can still be fully disqualified. After the parent matrix is discontinued, the child discontinuations are not affected.

After starting a discontinuation, you cannot create a new qualification with the same matrix combination.

The intake form can also have expiration schedule and expiration reminder schedule.

## Feature at a Glance

### Introducing: **Supplier discontinuation process**

#### Template Configuration

1. Create and publish one discontinuation SM Process project template: Templates >> Action >> Template >> SM Process Project.
2. When users create a template, they must choose the already defined discontinuation process type for **SM Process Project**.
3. The template cannot contain **Process Initiator** and **Decision Maker** groups.
4. Except these points, the remaining template setup steps are the same as those for setting up any process project.

Disqualification Project Template

Save Cancel

Listed below are the details of this SM Process Project, including Tasks associated with it. You can [Edit Overview](#), [Copy or Move](#) the SM Process Project, [Publish](#) it for use by [More](#)

Name: Disqualification Project Template [Translations](#)

Description: [Rich Text Editor](#)  
Disqualification Project Template

Translations

ID: W63283668 [Info](#)

Owner: Customer Support Admin [Info](#)

Base Language: English

Rank: 0

SM Process Type: **Disqual Process** [Info](#) **2**

Applicable to direct Material:  Yes  No

Allowed Commodity Levels: From: To:

Access Control: (No restrictions - Accessible to all users) [View Details](#)

Disqualification Project Template

Status: Draft [Exit](#)

SM Process Project

Version: v1 (editing)

Overview Documents Tasks **Team** Conditions Advanced Options History

Team Members [Actions](#)

Group ↑	Members	Conditions
Project Owner	Customer Support Admin, Template Creator	(None)

**No Process Initiator & Decision Maker** **3**

# Feature at a Glance

## Introducing: **Supplier discontinuation process**

Qualifications

Process-qualifications Legacy qualifications

Process: External (Only) Qualification

CATEGORY	REGION	BUSINESS UNIT	STATUS	OWNER	EFFECTIVE DATE
Chlorine Cl Category ID: 12141901	USA Region ID: USA	FE - Central Purchasing Business Unit ID: BU01	Qualified		2/1/2019
Fuels Category ID: 15	Asia Pacific Region ID: APAC	VK - Aberdeen	Qualified	sridhar	

Priority Supplier Qualification

CATEGORY	REGION	BUSINESS UNIT	STATUS	OWNER	EFFECTIVE DATE
Air compressed spray Category ID: 44322946 Show all	Denmark Region ID: Denmark	HR Business Unit ID: 2	Qualified	Balachandar	10/24/2021
Accounting machines Category ID: 44322943 Show all	Denmark Region ID: Denmark	TS - Production Purchasing Business Unit ID: BU02 Aberdeen	Qualified	Balachandar	2/10/2022
Rubber or vinyl mats Category ID: 62101541	Denmark Region ID: Denmark	HR Business Unit ID: 2	Supplier Disqualified	Balachandar	2/10/2022

Back to search results

**NO**

**NOVTESR**

SM Vendor ID: S10038402

Summary

About

Registration Status: Registered	Preferred Status: Not Preferred	ERP Integration Status: In Process
Qualification Status: Qualified For Some	Onboarding time: 0 day	Created On: 3 Mar 2022

More options

Process status	2	Anti-Corruption Check Completed
Qualification status	0	Anti-Corruption Check Failed
Categories	0	Compliance Check In Progress
Regions	0	Conditionally Qualified
Category status	0	Denied ✓
		Disqualification Pending decision ✓

1. In the Qualifications area of the supplier 360° profile the **Discontinue** option is available under the (...) icon for Qualification processes with an approved or conditionally approved status.
2. All discontinuation process records are displayed in red. If a discontinuation process is created with the subset Matrix for a process, this discontinuation process is nested under the existing process.
3. In the Summary area of the supplier 360° profile, the overall qualification status might be updated as decision makers set decision statuses for discontinuation processes.
4. In supplier search, buyers can search suppliers who have discontinuation processes by selecting their configured discontinuation status in Process status.

## Feature at a Glance

### Introducing: **Supplier discontinuation process**

#### Data Import Capabilities

New lifecycle type of Disqualification is required in Process Types and Process Statuses master data imports. Note **only one** Disqualification process type must be included – this will be automatically associated with all qualification process types.

AribaLifeCycle	Description	Name	UniqueName
Disqualification	Supplier Disqualification Process		
Qualification			
Miscellaneous	Certificate Collection Process		

Description	Name	ProcessType.UniqueName	ProjectStatus	UniqueName
Disqualification In Progress	Disqualification In Progress	Disqualification_Process	InProgress	Disqualification_In_Progress
Disqualification Pending decision	Disqualification Pending decision	Disqualification_Process	PendingDecision	Disqualification_Pending_decision
Disqualification Denied	Disqualification Denied	Disqualification_Process	Denied	Disqualification_Denied
Supplier Conditionally Disqualified	Supplier Conditionally Disqualified	Disqualification_Process	ConditionallyApproved	Supplier_Conditionally_Disqualified
Disqualification Not Started	Disqualification Not Started	Disqualification_Process	InCreation	Disqualification_Not_Started
Disqualification Started	Disqualification Started	Disqualification_Process	Created	Disqualification_Started
Supplier Disqualified	Supplier Disqualified	Disqualification_Process	Approved	Supplier_Disqualified
Disqualification Failed	Disqualification Failed	Disqualification_Process	Failed	Disqualification_Failed

Buyer administrators can create or change the discontinuation status of existing qualification processes with the **Supplier Process Projects Import** in SM Admin.

vendorId	type	categoryIds	regionIds	departmentIds	status	action	erpVendorId	sourceSystem	expiryDate	discontinue
S31318108	Data Security	43223101	AU	BU02	Disqualification_Pending_decision		VDR4407063	SM		Y
S31318108	Data Security	43223103	AU	BU01	Supplier_Conditionally_Disqualified		VDR4407063	SM		Y
S31318108	Data Security	43223101	China	BU02			VDR4407063	SM		Y
S15760385	200_PriorityQual	52101511	Denmark		2		VDR2040031	SM		Y
S31318108	Data Security	43223104	EMEA	BU01	Supplier_Conditionally_Disqualified		VDR4407063	SM		Y

DEMO

# **Enhancements to the Summary area in the supplier 360° profile: consolidated supplier information [SM-17596]**



## Feature at a Glance

# Introducing: Enhancements to the Summary area in Supplier 360 profile

Ease of implementation  Low touch / simple  
Geographic relevance  Global

### Customer challenge

The current supplier 360 displays supplier data generated and updated within the SAP Ariba Supplier Management solution. However, it is missing data from the broader SAP Procurement suite, the SAP ecosystem, and other 3rd party providers. Customers seeking a single location for a 360 view are forced to navigate to multiple solutions to obtain additional relevant supplier information.

### Meet that challenge with SAP Ariba

The new Supplier 360 summary area introduces a new data panel framework to house a library of supplier information data sources. The data panel framework retains key supplier data such as supplier status information, key contacts, and address information. It also introduces new data sources of SAP Ariba Risk exposure score, diversity information, and a complete supplier ID snapshot.

### Experience key benefits

- New summary area provides a platform for a comprehensive view of your supplier
- SAP Ariba Risk exposure score now incorporated into Supplier 360
- Diversity information now incorporated into Supplier 360
- Full list of supplier ID's now incorporated into 360

### Solution area

SAP Ariba Supplier Lifecycle and Performance  
SAP Ariba Supplier Information and Performance Management  
SAP Ariba Strategic Sourcing Suite

### Implementation information

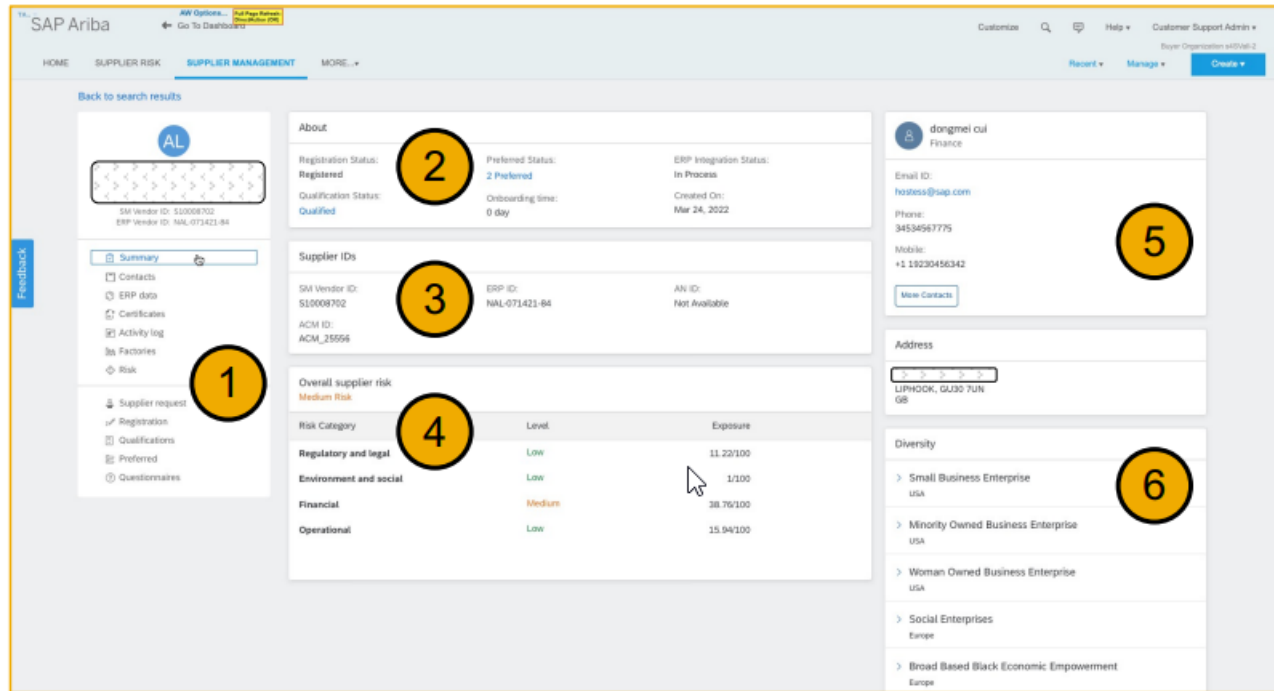
This feature is **automatically on** for all customers with the applicable solutions and is ready for immediate use.

### Prerequisites and Restrictions

- To see Risk scores, SAP Ariba Risk must be enabled and configured
- To see [Diversity information](#), please import data using Diversity Info and Vendor Diversity data files in the Data Import or Export task in SM Administration

# Feature at a Glance

## Introducing: Enhancements to the Summary area in Supplier 360 profile





1. Supplier Request moved to its own area
2. Supplier summary information, including new “Onboarding Status” metric
3. Comprehensive listing of supplier IDs, now including ACM\_ID
4. New Supplier Risk exposure score data panel (from SAP Ariba Risk)
5. Supplier contacts, including new linked contact list
6. New Supplier Diversity data panel

DEMO

# **Calculate inherent risk for engagement requests by risk domain [ARI-16207]**

## Feature at a Glance

# Introducing: Calculate inherent risk for engagement requests by risk domain

Ease of implementation  High touch  
Geographic relevance  Global

### Customer challenge

Risk Managers need to have accurate details when reviewing the inherent risk of an engagement request. Without a detailed understanding of the contributing factors which influence the inherent risk score calculation, it becomes difficult to accurately respond to the inherent risk score generated by the system.

### Meet that challenge with **SAP Ariba**

This feature enables calculation of inherent risk rating for each risk domain represented in an engagement request. Risk experts can now assign weights to risk domains, so that the engagement-level inherent risk calculation reflects the relative importance of each.

### Experience key benefits

End users now able to easily identify leading indicators driving their inherent risk score calculations  
Enables more accurate due diligence responses and understanding from within an engagement risk project

### Solution area

SAP Ariba Supplier Risk

### Implementation information

This feature is automatically on for all customers with the applicable solutions but requires **customer configuration**.

### Prerequisites and Restrictions

Site must be configured for use of control-based engagement risk assessment projects

Inherent risk screening questionnaire in Supplier Risk Engagement Template must have questions organized into sections.

## Feature at a Glance

### Introducing: **Calculate inherent risk for engagement requests by risk domain**

With the introduction of this feature, users can choose between two methods of calculating inherent risk for engagements. Once you configure your site for domain-based inherent risk, the system actually does both calculations and stores the results separately.

- The **Inherent risk rating** field is the original inherent risk value, calculated based on the overall score for the inherent risk screening questionnaire.
- The **Weighted inherent risk rating** field is the new value, calculated based on the scores for the sections to which domains are assigned and using the weight assigned to each domain.

The **Inherent risk rating** value is used in the logic for determining:

- The controls required for an engagement request, based on your defined engagement control mappings.
- Periodic review dates for an engagement.
- There is currently no option to use the **Weighted inherent risk rating** value instead.

## Feature at a Glance

### Introducing: **Calculate inherent risk for engagement requests by risk domain**

#### Configuration

- Enable the self-service parameter in Intelligent Configuration Manager.
  - Setting this parameter to “Yes” adds the ability to assign risk domains and domain weights to sections of the inherent risk screening questionnaire, in order to calculate inherent risk by risk domain.

ID	<b>Application.SR.Engagement.DomainBasedInherentRisk</b>
Name	<b>Calculate inherent risk for engagements by risk domain</b>
Default value	<b>No</b>

- Import **risk type** definitions in Administration. These risk types are used as the risk domain values you will use in the engagement template.
- Update the applicable Supplier Risk Engagement Template to assign values for domain and domain weights for each section.
- Publish the control-based engagement risk assessment project template.

## Feature at a Glance

### Introducing: **Calculate inherent risk for engagement requests by risk domain**

In the Supplier Risk Engagement Template, you can associate a risk domain and domain weight with one or more sections of the inherent risk screening questionnaire

**Edit Section**

Use sections to organize your content. They are similar to folders or directories.

**34 - Enriched corporate information - Do...**

Name: \*  [Translations](#)

Description: 

Rich text editor toolbar: Bold, Italic, Underline, List, Link, Size, Font, Color, Background Color, Undo, Redo.

**Translations**

Visible to Participant:  ⓘ

Team Access Control:  [View Details](#) ⓘ

Domain:

Domain Weight:

Visibility Conditions:  ⓘ

I



## Feature at a Glance

### Introducing: **Calculate inherent risk for engagement requests by risk domain**

- Using the existing percentage-based or point-based system, the inherent risk score is calculated by section; then the score for any section with an assigned risk domain contributes to the score for that domain.
- An overall risk score for the engagement is calculated using the domain scores and their weights.

The screenshot displays an 'Engagement Summary' interface. On the left, there is a sidebar with fields: 'Commodity' (value: '&Data base & reporting software'), 'Requester' (value: 'John Doe'), 'Inherent risk' (value: 'Significant'), and 'Supplier' (value: 'Governor Office For Emergence'). The 'Inherent risk' field is circled in red. A tooltip window is open over the 'Significant' value, showing a table of risk domains and their associated risk levels. The table has two columns: 'Risk domains' and 'Overall inherent risk'. The overall risk is 'Significant'. The risk domains and their levels are: Enriched corporate information (Important), Operational (Critical), Regulatory & legal (Critical), Watchlists (Important), Financial (Significant), Environmental & social (Important), and Sanctions (Important).

Risk domains	Overall inherent risk
Enriched corporate information	Important
Operational	Critical
Regulatory & legal	Critical
Watchlists	Important
Financial	Significant
Environmental & social	Important
Sanctions	Important

DEMO

Time for a quick **Survey/Feedback.**



# Thank you.

Contact information:

Kamakshi Sanjeevgowda [kamakshi.sanjeevgowda@sap.com](mailto:kamakshi.sanjeevgowda@sap.com)

Prashant Shettar [p.shettar@sap.com](mailto:p.shettar@sap.com)

Keshav Parameshwara [keshav.parameshwara@sap.com](mailto:keshav.parameshwara@sap.com)

# 2202 (Q1-2022) Appendix



# Feature Releases

Features	Description	Feature is available in						Enabling this feature
		SAP Ariba Sourcing	SAP Ariba Contracts	SAP Ariba SIPM	SAP Ariba SLP	SAP Ariba Supplier Risk	SAP Ariba Strategic Sourcing Suite	
<b>Strategic Sourcing for Industries</b>								
<b>Ability to create recurring quotes for material items [DMS-14922]</b>	This feature introduces recurring quote requests that automatically create and publish events according to schedules that the buyers specify. Buyers using guided sourcing can configure recurring quote requests for frequently or regularly sourced material items and schedule the frequency at which sourcing events are to be held. You can specify how often, in how many weeks or months, and on what day and at what time the sourcing events go live. The event configuration, including items, templates, and suppliers, specified at the time of creating a recurring quote request is applied to all instances of sourcing events that are created based on the recurring quote request. A new widget, Recurring quotes, is added to provide you easy access to recurring quotes from the product sourcing dashboard.	✓					✓	Automatically On
<b>Create BOM quote requests in guided sourcing from the Product Sourcing dashboard [DMS-15658]</b>	This feature allows you to create BOM quotes in guided sourcing. Previously, you could only create BOM quotes in the legacy sourcing interface. The feature also adds material 360° links to items that you add to your guided sourcing project.	✓					✓	Automatically On

# Feature Releases

Features	Description	Feature is available in					Enabling this feature	
		SAP Ariba Sourcing	SAP Ariba Contracts	SAP Ariba SIPM	SAP Ariba SLP	SAP Ariba Supplier Risk		SAP Ariba Strategic Sourcing Suite
<b>Strategic Sourcing for Industries</b>								
<b>Ability to limit volume scale overrides by suppliers to alternative bids in guided sourcing [DMS-16027]</b>	This feature introduces a new event rule, Allow overrides only in alternative bids, that allows buyers using guided sourcing to limit the pricing conditions volume scale overrides by suppliers to alternative bids. The ability to limit the supplier overrides to alternative bids enables buyers to receive primary bids with uniform volume scales for consistent comparison of bids from all participants. Suppliers will continue to have the flexibility to customize volume scales in alternative bids to make their best offers.	✓					✓	Automatically On
<b>Sourcing request support in guided sourcing for the 4BL and 4QN integration scenarios [DMS-16690]</b>	This feature enables buyers using the Central Procurement with SAP Ariba Sourcing (4QN) and Sourcing with SAP Ariba Sourcing (4BL) integration scenarios to view, approve, and act on sourcing requests in guided sourcing.	✓					✓	Automatically On
<b>Dynamic Line Item Definitions [SSR-2731]</b>	Item and lot definitions can now be created in the Dynamic Sourcing Library (or on the Category Attribute Hierarchy Category Attribute Management page) and configured so that they are added to sourcing events automatically when specific rule conditions are met.	✓					✓	Customer Configured

# Feature Releases

Features	Description	Feature is available in					Enabling this feature	
		SAP Ariba Sourcing	SAP Ariba Contracts	SAP Ariba SIPM	SAP Ariba SLP	SAP Ariba Supplier Risk		SAP Ariba Strategic Sourcing Suite
<b>Strategic Sourcing for Industries</b>								
<b>Enhanced UI for article master data creation [SSR-3207]</b>	In guided sourcing, this feature allows you to add ad hoc items that you create in a sourcing event to article master data in an external system by sending those items to the external system. You can create single articles, article variants, and displays. You can also extend an article for multiple plants and send the article extensions to an ERP. In SAP Ariba Sourcing, this feature provides new filtering and sorting functionality when adding ad hoc sourcing event items to article master data.	✓					✓	Customer Configured
<b>Copy Material Group to Commodity field in guided sourcing [SSR-3694]</b>	This feature maps the material group of an item in material master to the commodity of the item in guided sourcing when the Material Group ID and Commodity ID contain the same values.	✓					✓	Customer Configured
<b>Dynamic Sourcing Library: New User Experience for the Category Attribute Hierarchy (CAH) [SSR-3060]</b>	The Dynamic Sourcing Library allows you to create and manage sourcing objects such as questions, product questionnaires, requirements, terms (also known as characteristics), and sections in a single location and use rules to have them added to sourcing events dynamically when specified conditions are met.	✓					✓	Customer Configured