



Feature at a Glance

Topical Workbenches

Sanjay Sood, SAP Ariba
Target GA: May, 2022

CONFIDENTIAL

Feature at a Glance

Introducing: **Topical Workbenches**


Customer challenge

Today the menu options for Orders and Releases, Invoices and Payments topics lead to the old experience. The user has a mixed user experience with these documents available on the workbench with the new experience and also old pages through the menu options.

Meet that challenge with **SAP Ariba**

- Topical Workbench tiles provide consistent user experience as experienced through the general Workbench for the same functions.
- Covering for Orders, Invoices and Payments menu options.

Ease of implementation

 some complexity – phased rollout

Geographic relevance

 Global

Experience key benefits

- Consistent and uniform user experience
- Workbench framework enables users to see of the tiles, in context of the menu on a single view, with the one selected highlighted.

Solution area

Ariba Network
SAP Business Network Workbench

Implementation information

This feature is planned to be rolled out in phases and will not be immediately available to all SAP Business Network Suppliers with the SAP Ariba 2205 release on May 20.

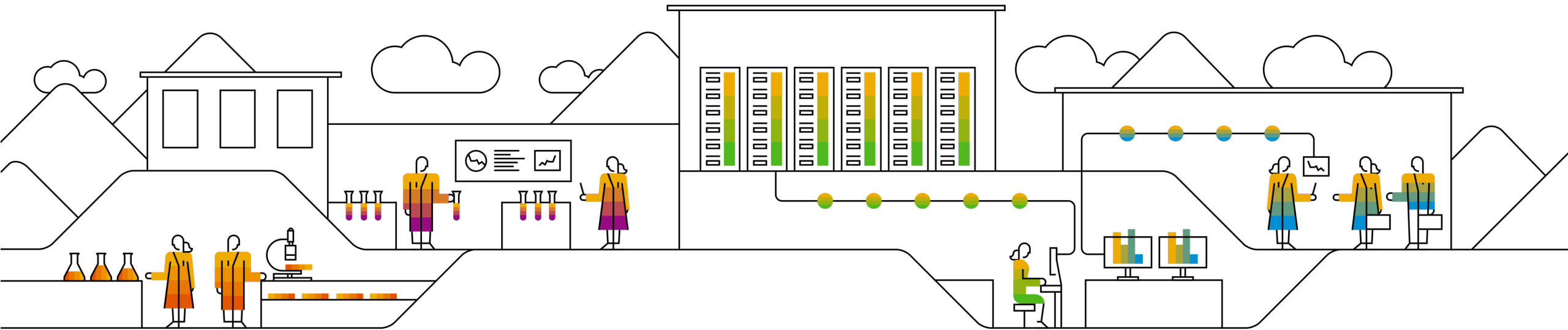
Menu options redirect to the new Workbench experience.

Prerequisites and Restrictions

None

What's New?

Menu redirects to Topical Workbench



Feature at a Glance

Introducing: Topical Workbenches

Order and Releases menu option redirects to Orders Topical Workbench

Home Enablement Workbench Orders **Orders and Releases** Fulfillment Invoices Payments Catalogs Reports Assessments Create ...

Support the people of Ukraine. Update the categories and service locations in your Marketing profile and enable the Support Ukraine toggle to match buyer postings for urgently-needed humanitarian aid for Ukraine. [Learn More](#) | [Update Profile](#)

Orders and Releases return buyer2 Exact match Order number

SAP Business Network Enterprise Account

Home Enablement Workbench Orders Fulfillment Invoices Payments Catalogs Reports Assessments Create ...

Orders

12 Orders Last 31 days	0 Items to confirm Last 31 days	0 Items to ship Last 31 days	22 Return items Last 31 days	12 New orders Last 31 days	0 Changed orders Last 31 days	12 Orders to invoice Last 31 days	1 Orders with service line Last 31 days
------------------------------	---------------------------------------	------------------------------------	------------------------------------	----------------------------------	-------------------------------------	---	---

Orders (12)
[Edit filter](#) | [Last 31 days](#)

[Resend Failed Orders](#) |

Pin	Order Number	Customer	Amount	Date ↓	Order Status	Amount Invoiced	Actions
	po-return-cat-final	return buyer2	€2,570.90 EUR	Mar 16, 2022	New		...
	po-just-return-k01	return buyer2	€2,570.90 EUR	Mar 15, 2022	New		...
	po-just-return-02	return buyer2	€2,570.90 EUR	Mar 11, 2022	New	€-8.15 EUR	...
	po-just-return-01	return buyer2	€2,570.90 EUR	Mar 11, 2022	New	€-8.15 EUR	...
	po-return-mayra03	return buyer2	€2,570.90 EUR	Mar 11, 2022	New		...
	po-return-mayra02	return buyer2	€2,570.90 EUR	Mar 11, 2022	New		...
	po-return-mayra01	return buyer2	€2,570.90 EUR	Mar 11, 2022	New		...
	po-return-990	return buyer2	€2,570.90 EUR	Mar 11, 2022	New	€-8.15 EUR	...

Feature at a Glance

Introducing: Topical Workbenches

Invoices, Credit memos or Debit memos redirect to Invoice Topical Workbench

The screenshot displays the SAP Business Network Invoices topical workbench. The top navigation bar includes 'Home', 'Enablement', 'Workbench', 'Orders', 'Fulfillment', 'Invoices', 'Payments', 'Catalogs', 'Reports', and 'Assessments'. A dropdown menu is open under 'Invoices', with 'Invoices' selected and highlighted by a red box. Other options in the menu include 'Credit Memos', 'Debit Memos', 'Timestamp Verification', and 'Drafts'. Below the menu, a dashboard shows various invoice categories with counts and time filters:

- Invoices: 3 (Last 31 days)
- Rejected invoices: 0 (Last 31 days)
- Due invoices - Approved: 0 (Last 31 days)
- Invoices pending approval: 3 (Last 31 days)
- Approved invoices pending payment: 0 (Last 31 days)
- Paid invoices: 0 (Last 31 days)
- Draft invoices: 0 (Last 50 days)
- Credit Memos: 3 (Last 90 days)
- Debit Memos: 0 (Last 90 days)

Below the dashboard, there is a section for 'Invoices (3)' with an 'Edit filter' link and a 'Last 31 days' filter. A table lists the invoices:

Pin	Invoice Number	Customer	Reference	Invoiced Date ↓	Amount	Routing Status	Invoice Status	From address	To address	Actions
	CM-CAL02	return buyer2	po-just-return-02	Mar 11, 2022	€-8.15 EUR	Sent	Sent			...
	CM-CAL01-ret	return buyer2	po-just-return-01	Mar 11, 2022	€-8.15 EUR	Sent	Sent			...
	CM-CM990	return buyer2	po-return-990	Mar 11, 2022	€-8.15 EUR	Sent	Sent			...

With respective tile corresponding to menu option selected, in focus.

Feature at a Glance

Introducing: Topical Workbenches

Early Payments, Scheduled Payments & Remittances redirect to Topical Workbench

The screenshot displays the SAP Business Network Enterprise Account interface. The top navigation bar includes 'Home', 'Enablement', 'Workbench', 'Orders', 'Fulfillment', 'Invoices', 'Payments', 'Catalogs', 'Reports', and 'Assessments'. The 'Payments' menu is open, showing options: 'Early Payments', 'Scheduled Payments', 'Remittances', 'Early Payment Rules', and 'SAP Supplier Financing'. The 'Early Payments' option is highlighted with a red box. Below the menu, the 'Payments' section shows three tiles: 'Early payment offers' (\$0.0 USD, Next 90 days), 'Scheduled payments' (\$0.0 USD, Next 90 days), and 'Remittances' (\$0.0 USD, Last 31 days). The 'Scheduled payments' tile is currently in focus. Below this, there is a section for 'Scheduled payments (0)' with an 'Edit filter' button and a 'Next 90 days' filter. A table with columns: Invoice, Payment Proposal, Customer, Method, Scheduled Payment Date, Settlement Date, Remaining Days, Amount Due, Status, and Early Pay Status is shown. The table is currently empty, displaying a message: 'There is currently no document available to view'.

With respective tile corresponding to menu option selected, in focus.

Follow us



www.sap.com/contactsap

© 2022 SAP SE or an SAP affiliate company. All rights reserved.

No part of this publication may be reproduced or transmitted in any form or for any purpose without the express permission of SAP SE or an SAP affiliate company.

The information contained herein may be changed without prior notice. Some software products marketed by SAP SE and its distributors contain proprietary software components of other software vendors. National product specifications may vary.

These materials are provided by SAP SE or an SAP affiliate company for informational purposes only, without representation or warranty of any kind, and SAP or its affiliated companies shall not be liable for errors or omissions with respect to the materials. The only warranties for SAP or SAP affiliate company products and services are those that are set forth in the express warranty statements accompanying such products and services, if any. Nothing herein should be construed as constituting an additional warranty.

In particular, SAP SE or its affiliated companies have no obligation to pursue any course of business outlined in this document or any related presentation, or to develop or release any functionality mentioned therein. This document, or any related presentation, and SAP SE's or its affiliated companies' strategy and possible future developments, products, and/or platforms, directions, and functionality are all subject to change and may be changed by SAP SE or its affiliated companies at any time for any reason without notice. The information in this document is not a commitment, promise, or legal obligation to deliver any material, code, or functionality. All forward-looking statements are subject to various risks and uncertainties that could cause actual results to differ materially from expectations. Readers are cautioned not to place undue reliance on these forward-looking statements, and they should not be relied upon in making purchasing decisions.

SAP and other SAP products and services mentioned herein as well as their respective logos are trademarks or registered trademarks of SAP SE (or an SAP affiliate company) in Germany and other countries. All other product and service names mentioned are the trademarks of their respective companies.

See www.sap.com/copyright for additional trademark information and notices.